

KAYENNE/KARRERA/ GV KORONA

K-FRAME

Version 15.0

Release Notes

071896501-AQ

2020-09-29

Patent Information

This product may be protected by one or more patents.

For further information, please visit: www.grassvalley.com/patents/

Copyright and Trademark Notice

Grass Valley®, GV® and the Grass Valley logo and/or any of the Grass Valley products listed in this document are trademarks or registered trademarks of GVBB Holdings SARL, Grass Valley USA, LLC, or one of its affiliates or subsidiaries. All other intellectual property rights are owned by GVBB Holdings SARL, Grass Valley USA, LLC, or one of its affiliates or subsidiaries. All third party intellectual property rights (including logos or icons) remain the property of their respective owners.

Copyright ©2018 GVBB Holdings SARL and Grass Valley USA, LLC. All rights reserved.

Specifications are subject to change without notice.

Terms and Conditions

Please read the following terms and conditions carefully. By using Video Production Center documentation, you agree to the following terms and conditions.

Grass Valley hereby grants permission and license to owners of Video Production Center to use their product manuals for their own internal business use. Manuals for Grass Valley products may not be reproduced or transmitted in any form or by any means, electronic or mechanical, including photocopying and recording, for any purpose unless specifically authorized in writing by Grass Valley.

A Grass Valley manual may have been revised to reflect changes made to the product during its manufacturing life. Thus, different versions of a manual may exist for any given product. Care should be taken to ensure that one obtains the proper manual version for a specific product serial number.

Information in this document is subject to change without notice and does not represent a commitment on the part of Grass Valley.

Warranty information is available from the Legal Terms and Conditions section of Grass Valley's website (www.grassvalley.com).

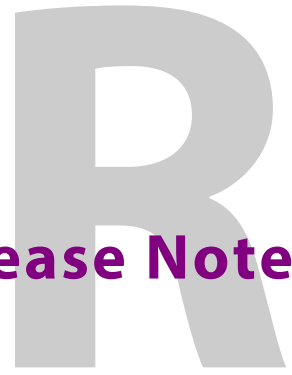
Title	Kayenne/Karrera/GV Korona Release Notes
Part Number	071896501-AQ
Revision	2020-10-12

toc

Table of Contents

Patent Information	ii
Copyright and Trademark Notice.....	ii
1 K-Frame Version 15.0 Release Notes	1
About this Manual.....	1
For More Information.....	1
GV K-Frame X/V-series Downgrade Instructions	1
New in this Release	1
Configure the Global Registry	2
About the K-Frame Software Update	4
Run the Menu Auditor for Third Party Updates	4
Materials Required	5
Update the K-Frame Software.....	5
K-Frame Installer Program Description	6
Update the K-Frame System Software.....	9
Update the GV Korona Control Panel Software	10
About Updating Spare Kayenne Control Panel Modules	10
Install the Menu Panel Application Update	10
Soft Panel Installation.....	12
FPGA and Board ARM Software Upgrades	12
About Host Address Decoder FPGA Upgrades	13
About the IP I/O Board ARM Software	13
Clear NV RAM for Control Panel and Frame	14
Sample Files and DPM Effects	15
Sample DPM Effects	15
About K-Frame V-series and S-series Samples and Effects	15
Install NetConfig and Newton Configurator (Optional).....	15
Check Software Versions.....	16
Confirm System Operation.....	16
Back up New Configuration and Effects Files.....	17
Update Other Grass Valley Switcher Systems Software.....	17
Individual Switcher System Component Update	17
K-Frame Software Removal With Windows OS	17
Deployment Archive Files.....	17
Calibrate the Lever Arm and Joystick	18
K-Frame System Suggested IP Addresses	18
IP Addresses and Single Control Surface Systems.....	19
IP Addresses and Multiple Control Surfaces and Suites.....	19
Contact Us	21

K-Frame Version 15.0 Release Notes



About this Manual

This document describes the new features and other information specific to the K-Frame Video Production Center, Version 15.0 switcher software for the Kayenne, Karrera, and GV Korona systems.

IMPORTANT: V15.0.0 is only supported by, and is the minimum software revision for, the GV K-Frame XP Compact Video Production Center.

For More Information

For information about installing, configuring, and operating K-Frame systems, see the K-Frame Video Production Center Documentation Libraries found on the Grass Valley website at grassvalley.com and on the USB thumb drive provided with your system.

New in this Release

- Image Store Enhancements—Increased capacity, 128GB memory available, faster file processing—[Image Store Movie Storage Capacity](#), on page 2
- Configuring the Global Registry for NMOS—[Configure the Global Registry](#), on page 2
- New K-Frame installer program, includes SSH—[K-Frame Installer Program Description](#), on page 5

Image Store Movie Storage Capacity

Image Store maximum storage capacity of movies for 128GB licensed memory.

128GB Maximum Image Store Capacity

Line Rate	Frequency (Hz)	Max. Frames	Time (m:s:f)
720p	59.94/60	32380	08:59:39
720p	50	32380	10:47:30
1080i	29.97/30	16124	08:57:14
1080i	25	16124	10:44:24
1080p	29.97/30	16124	08:57:14
1080p	25	16124	10:44:24
1080p	23.98/24	16124	11:11:20
1080p-A	59.94/60	16124	04:28:44
1080p-A	50	16124	05:22:24
1080p-B	59.94/60	16124	04:28:44
1080p-B	50	16124	05:22:24
2160p	29.97/30	3932	02:11:01
2160p	25	3932	02:37:07
2160p	23.98/24	3932	02:43:20
2160p	59.94/60	3932	01:05:31
2160p	50	3932	01:18:32

GV K-Frame XP Image Store Movie Lengths

EIF Files

Movies recorded with the GV K-Frame XP Image Store that are within the Maximum EIF Frames will be generated in the .EIF file format. .EIF files are compatible with other K-Frame systems (GV K-Frame X, K-Frame Standard, Compact, etc.).

EIF Maximum Image Store Movie Lengths

Line Rate	Frequency (Hz)	Max. Frames	Time (m:s:f)
720p	59.94/60	1136	00:18:56
720p	50	1136	00:22:35
1080i	29.97/30	505	00:16:25
1080i	25	505	00:20:04
1080p	29.97/30	505	00:16:25
1080p	25	505	00:20:04
1080p	23.98/24	505	00:21:01

EIF Maximum Image Store Movie Lengths

Line Rate	Frequency (Hz)	Max. Frames	Time (m:s:f)
1080p-A	59.94/60	505	00:08:25
1080p-A	50	505	00:10:04
1080p-B	59.94/60	505	00:08:25
1080p-B	50	505	00:10:04

ISF Files

Movies recorded with Image Store that are larger than the maximums, including all recorded in 2160p, will be generated in the .ISF file format. The .ISF format is supported by GV K-Frame XP systems only.

ISF Maximum Image Store Movie Lengths

Line Rate	Frequency (Hz)	Max. Frames	Time (m:s:f)
720p	59.94/60	32380	08:59:39
720p	50	32380	10:47:30
1080i	29.97/30	16124	08:57:14
1080i	25	16124	10:44:24
1080p	29.97/30	16124	08:57:14
1080p	25	16124	10:44:24
1080p	23.98/24	16124	11:11:20
1080p-A	59.94/60	16124	04:28:44
1080p-A	50	16124	05:22:24
1080p-B	59.94/60	16124	04:28:44
1080p-B	50	16124	05:22:24
2160p	29.97/30	3932	02:11:01
2160p	25	3932	02:37:07
2160p	23.98/24	3932	02:43:20
2160p	59.94/60	3932	01:05:31
2160p	50	3932	01:18:32

Configure the Global Registry

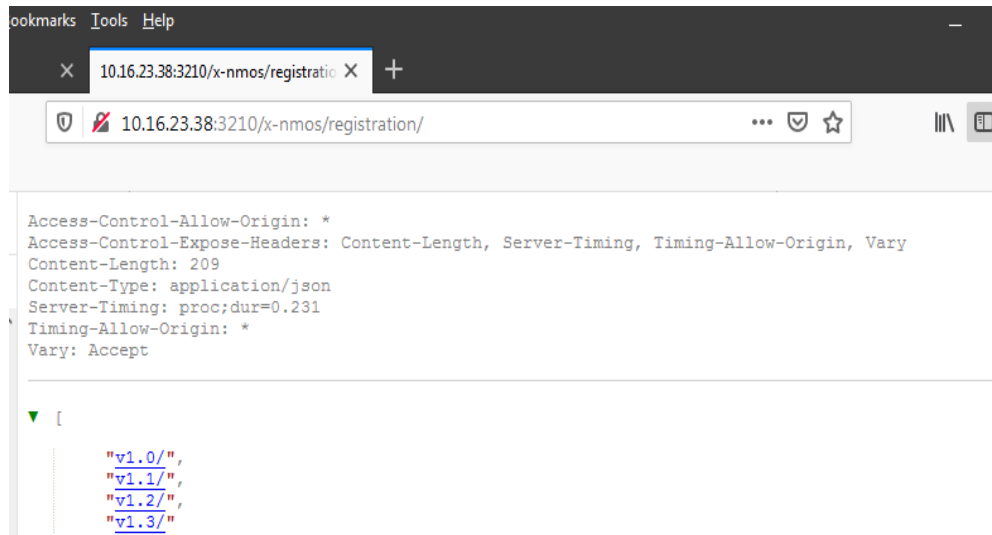
Where the GV K-Frame XP uses IS-04 and IS-05 APIs for automatic node control, monitoring, and management of available resources on the network using mDNS, Global Registry allows the Frame to write to a specific device's Registry over a valid IP Port using the Registration API (see the *Kayenne/Karrera/GV Korona Installation & Service Manual*).

- 1 In the Eng Setup, Node Settings, NMOS Configuration menu, select the **IP Address** data pad, enter the IP Address for the device, and select **Enter**.



- 2 Select the **IP Port** data pad, enter the IP Port for the device, and select **Enter**.

- 3 The Registration API result can be viewed by entering the API URL in a browser on the network, for example: 10.16.23.38:3210/x-nmos/registration/.



Note: If the Frame cannot locate the node using the provided IP Address and/or IP Port, it will revert to mDNS.

About the K-Frame Software Update

GV K-Frame XP systems are shipped with the current software version installed on the Frame and Control Surface. Updates to GV Switcher system software are available for download from the Grass Valley website. Software installation tools are provided with each update package.

The GV K-Frame XP Deployment Tool extracts and copies Grass Valley switcher system files to a Menu Panel or PC. These files include the K-Frame Installer Program.

The K-Frame Installer Program is used to install the extracted software to Grass Valley Video Processor Frame(s) and Control Panel(s) over the network. The program also launches other installation tools (wizards). One wizard installs the Menu application directly on the Menu Panel or PC running the installer program. If multiple Menu Panels (or PCs running the Menu application) exist, each must be updated individually. Installation wizards can also be launched for the KSP and NetConfig features.

Update the K-Frame Software

This software update procedure assumes your Grass Valley switcher system is fully operational with all network communications properly configured. Refer to the *Kayenne/Karrera/GV Korona Installation & Service Manual* for configuration instructions.

Back up Current Configuration and Effects Files:

- 1 Save your system configuration files (Eng Setup, User Setups), and your operational registers (EMEM, Macros, etc.) and other settings. You can create a Show file that contains all this information. See the K-Frame Kayenne/Karrera/GV Korona User Manual for file operations instructions.

Note: A thumb drive that includes the current Grass Valley switcher software version is a convenient location to back up these files.

- 2 Store the backup media in a safe place. You may want to use these files if you decide to back down to that earlier software version.

Deploy the Switcher Update Package Files and Installer:

- 1 Exit the Menu application and any other applications that may be running on the Menu Panel or PC.
- 2 Disable any virus protection, Windows firewall, and any other firewall protections that may have been installed on the Menu Panel or PC. Firewalls must be inactive to allow switcher system software installation over the network.
- 3 Run the K-Frame Setup application, either:
 - a Insert the K-Frame Software USB stick into an available port on the Menu Panel or PC. Locate the removable disk in My Computer, open **K-FrameSetup.exe**, and select **OK**,
 - or -
 - b Download the K-FrameSetup.exe file from the Grass Valley download site, open the file, and select **OK**.

Note: If the same K-Frame Deployment Tool version files are detected, a Repair/Remove screen is displayed, allowing re-installation or removal of the Deployment files

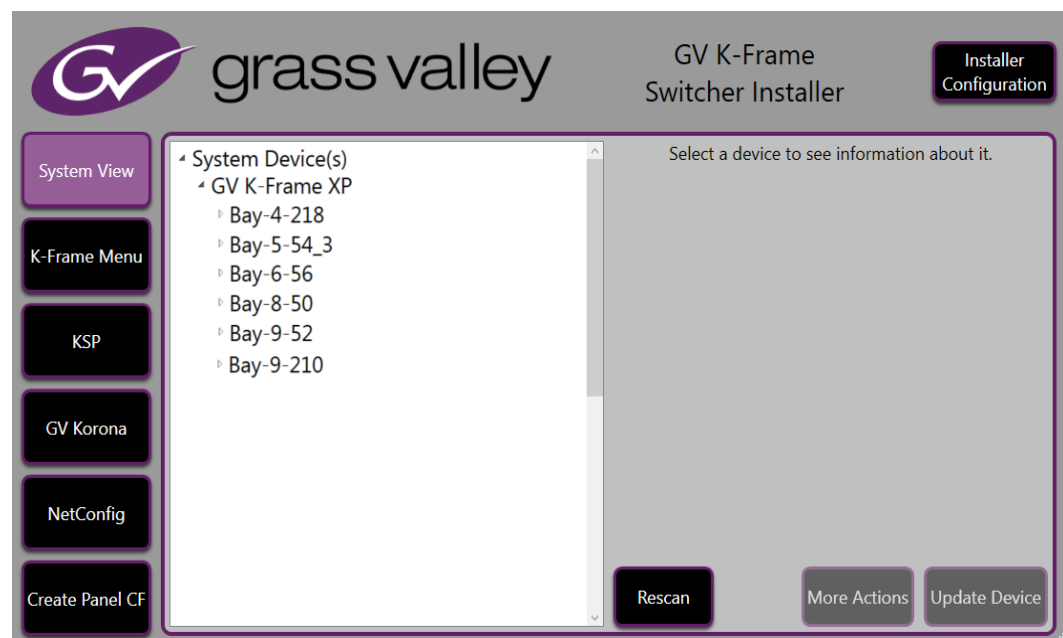
- 4 Select **Next** in the K-Frame Deployment Tool window.
- 5 Accept the license agreement and select **Next**.
- 6 Select **Next** to accept the default deployment location. Alternatively, you can Browse to a different location to deploy the files. The "Ready to Install the Application" screen appears next.
- 7 Select **Next** to deploy the files.

Result: When the deployment completes, the K-Frame Installer Program will launch automatically. After the switcher files have been deployed, the K-Frame Installer Program can be launched at any time by opening the **K-Frame Installer** from the desktop icon.

K-Frame Installer Program Description

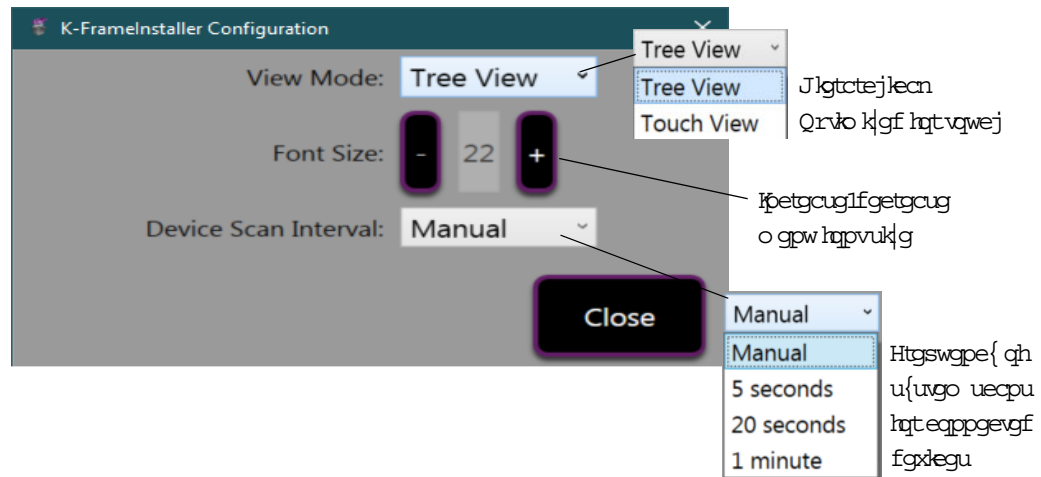
The K-Frame Installer Program menu has buttons on the left used to select various installers. Selecting the System button displays a hierarchy (Tree View) of connected devices.

Note: If a Video Processor Frame is started or rebooted, **Rescan** must be pressed to view the additional system.

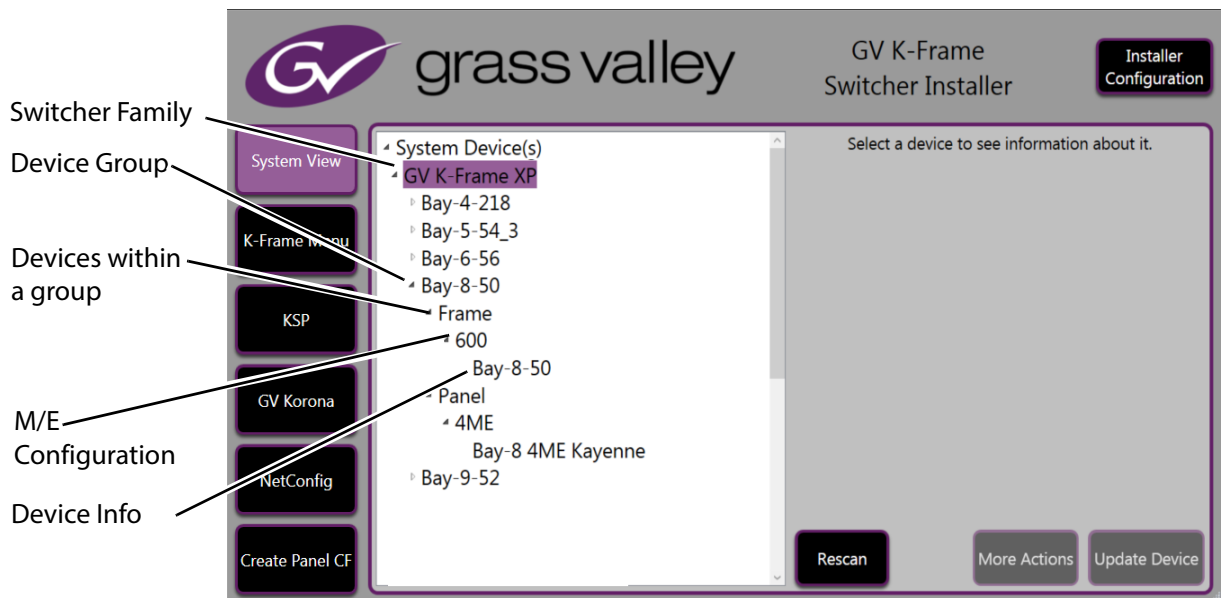


Configuring the Installer Menu

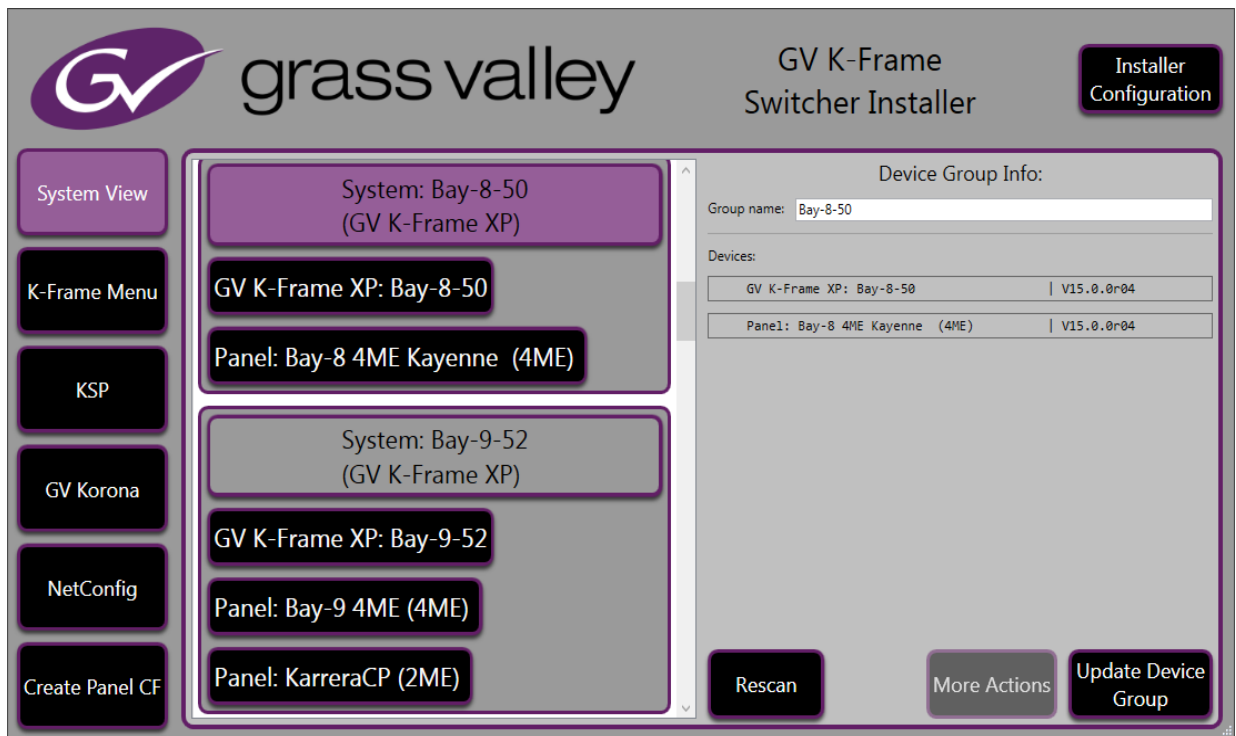
The **Installer Configuration** button (top right) is always available and provides customization of the installer menu.



When **System** is selected, a hierarchy (Tree View) or list of buttons (Touch View) is displayed showing the systems, their groups of devices on the network, and other information.



Touch View is organized by the Device Group.



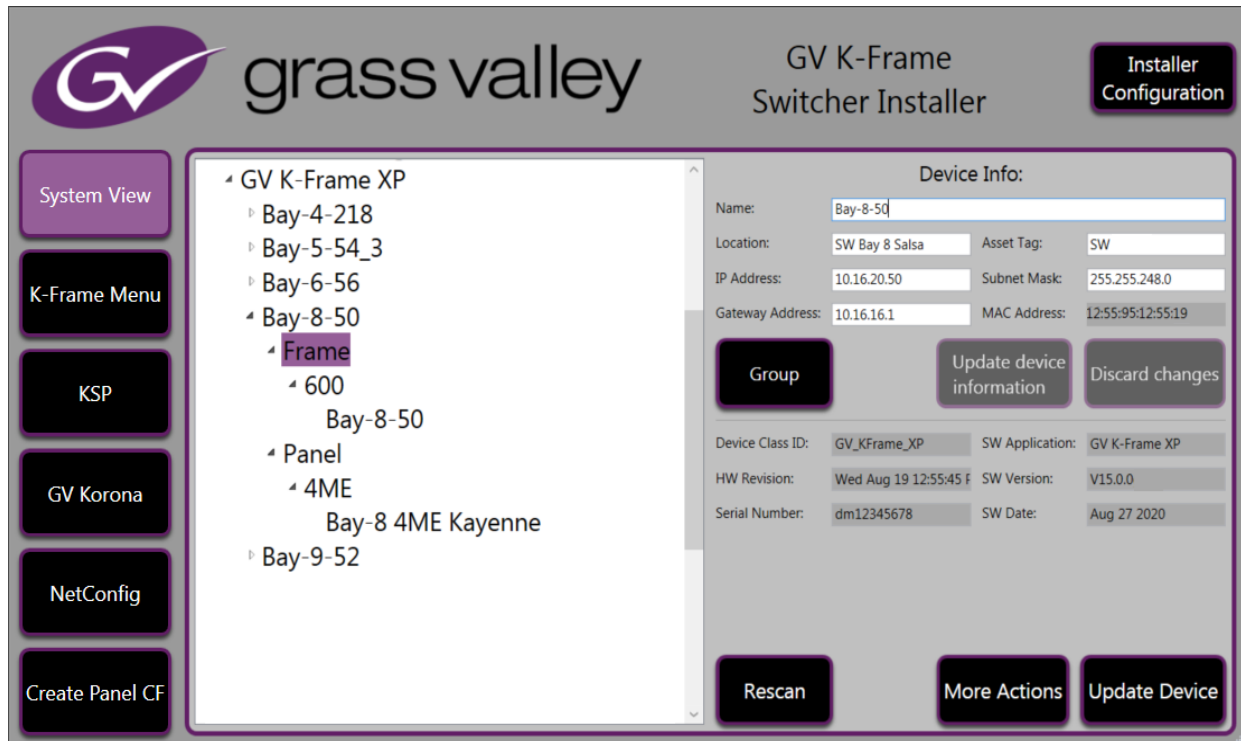
Selecting a Device Group or Device displays the Device Group/Device Info: menu (right) with configuration buttons:

Rescan—Rescan the system devices (refreshes the menu).

Update:

- **Update Device Group**—Update software for all devices in the group.
- **Update Device**—Update device software.

A group or device can be selected either in the tree/button list in the Group/Devices: list in the Device Group Info: menu (right). The Device Info: menu will be displayed (right).



Device Info can be edited in this menu. White Device info fields can be edited (gray fields cannot be edited but the text can be copied). Changes can be discarded or saved using the following buttons:

Discard changes—Deletes changes and reverts to previous configurations.

Update device information—Saves the updated device information to the Frame.

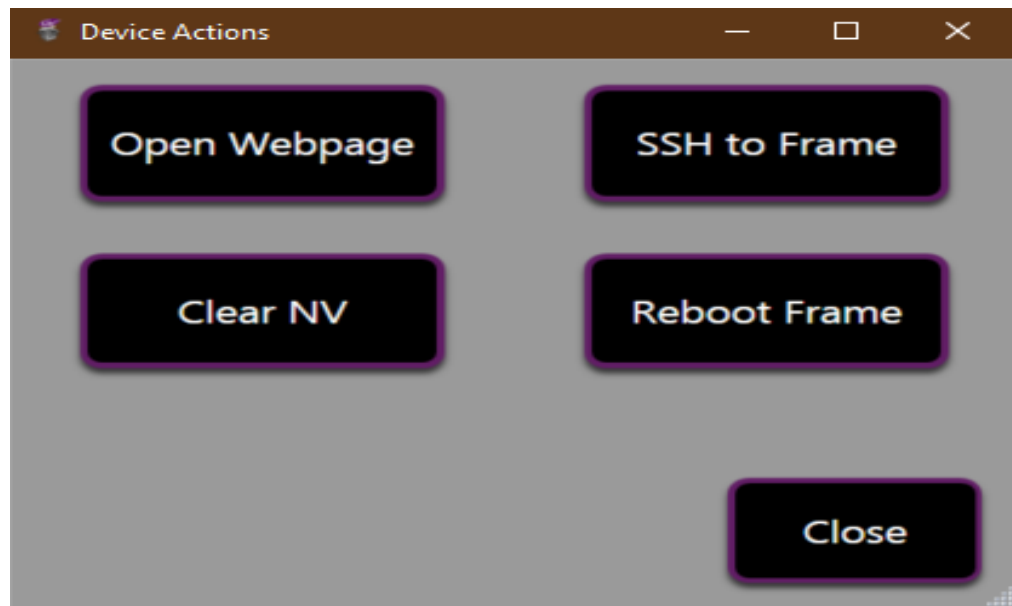
Group—Navigates to the Device Group Info: menu.

Rescan—Scans the network for devices and refreshes the menu to show the currently connected components and any modified system names.

Update Device—Update the device software.

More Actions—Provides context sensitive configuration for the selected device type:

Frame Device Actions



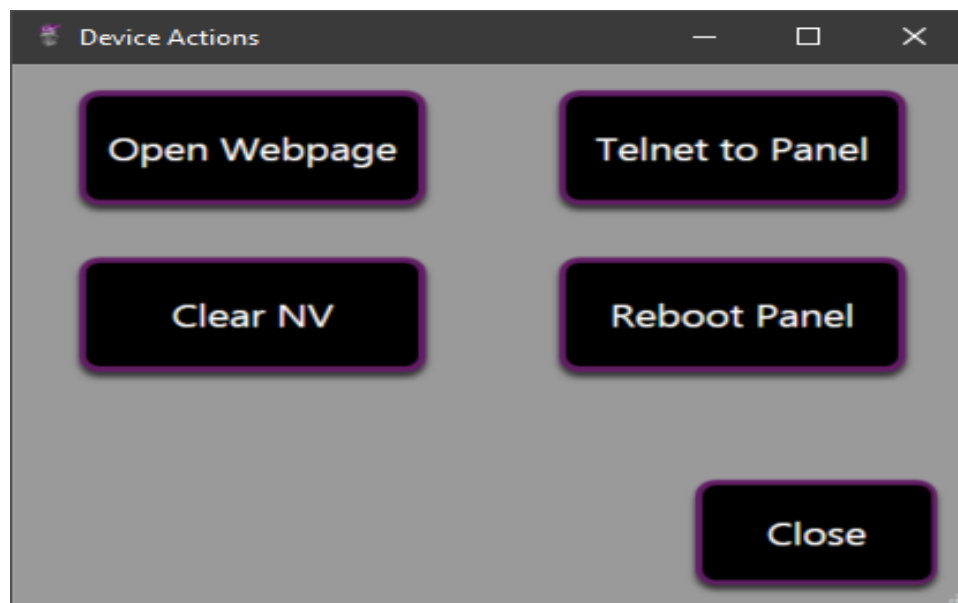
Open Webpage—Opens the device’s web page using the IP Address (see the *Kayenne/Karrera/GV Korona Installation & Service Manual*).

SSH to Frame—Starts an SSH session with the Frame device (see the *Kayenne/Karrera/GV Korona Installation & Service Manual*).

Clear NV—Clears NV Memory.

Reboot Frame—Reboots the Frame.

Control Panel Device Actions



Open Webpage—Opens the device’s web page using the IP Address.

Telnet to Panel—Starts a Telnet session for a Control Panel (see the *Kayenne/Karrera/GV Korona Installation & Service Manual*).

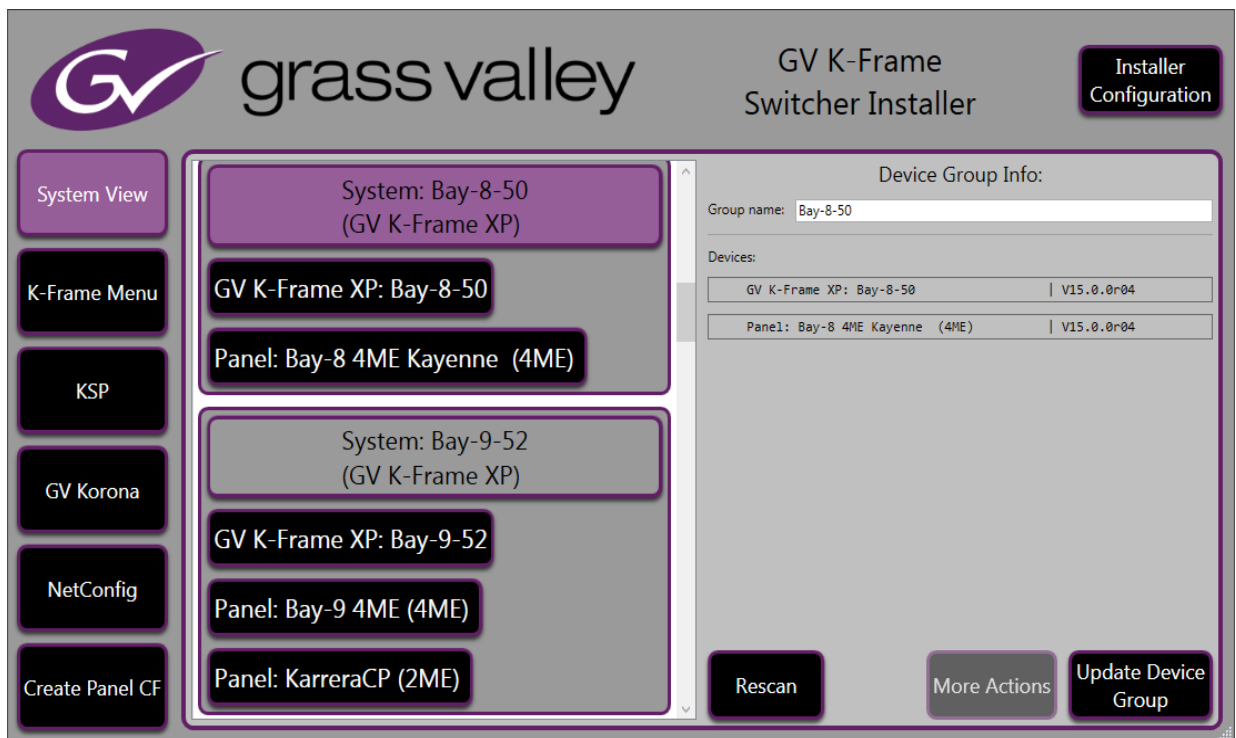
Clear NV—Clears NV Memory.

Reboot Panel—Reboots the Control Panel.

Update the K-Frame System Software

For Kayenne and Karrera, the K-Frame system’s Video Processor Frame and Control Panels can be updated in one operation. The GV Korona Control Panel is updated separately from the Frame ([Update the GV Korona Control Panel Software](#), on page 11).

- 1 With the K-Frame Switcher Installer Program launched, select the **System** button.
- 2 Select a group (or device). The **Update Device Group** button becomes active.



- 3 Select **Update Device Group**.
- 4 Select **Yes, update this device** if you agree.

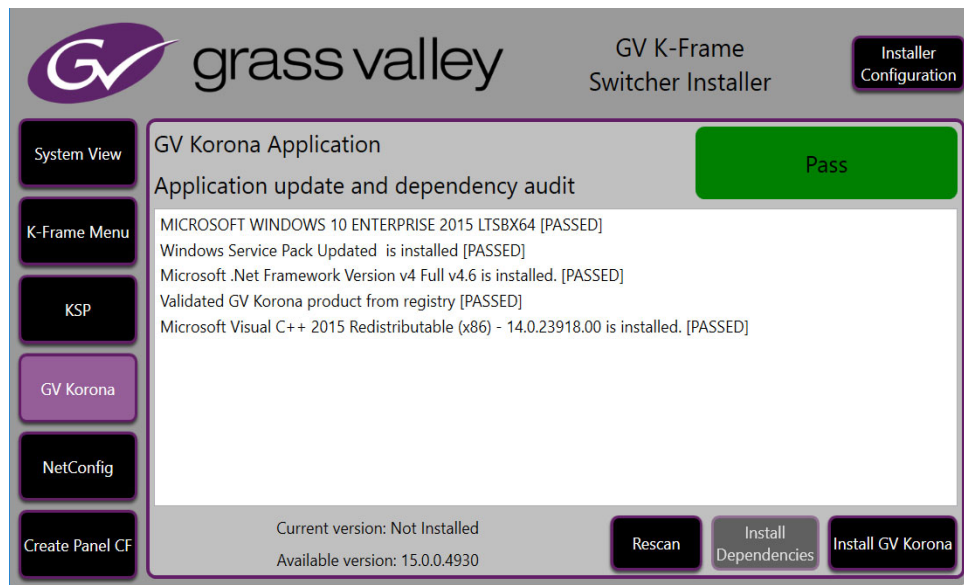
The system will reboot after the device update has been completed.

Update the GV Korona Control Panel Software

In addition to updating the GV Korona Control Panel software, third party software can be audited and dependencies updated in the GV Korona Application menu.

The **Rescan** button repeats the application dependency audit.

- 1 Select **GV Korona** in the GV K-Frame Switcher Installer.



- 2 Verify that the third-party applications have passed the audit.
- 3 If not, the **Install Dependencies** button will be active, select it to update the applications.

Note: If there is not a GV Korona Control Panel connected to the Device Group, the **Install Dependencies** button will not be available even if the other dependencies have passed the audit.

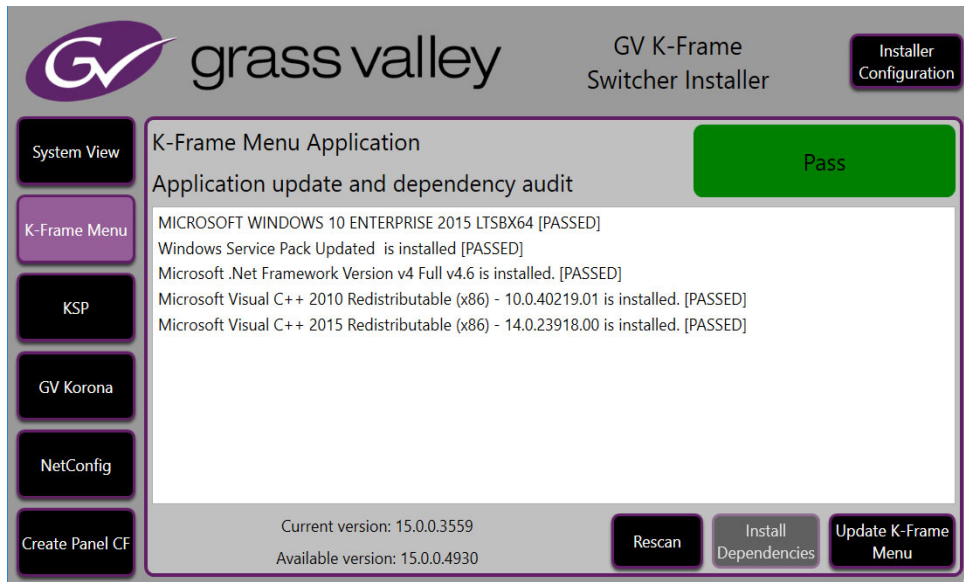
- 4 Select **Install GV Korona**.
- 5 Select **Yes, update this device** if you agree.

Update the K-Frame Menu Software

In addition to updating the K-Frame menu software, third party software can be audited and dependencies updated in the K-Frame Soft Panel Application menu.

The **Rescan** button repeats the application dependency audit.

- 1 Select **K-Frame Menu** in the GV K-Frame Switcher Installer.



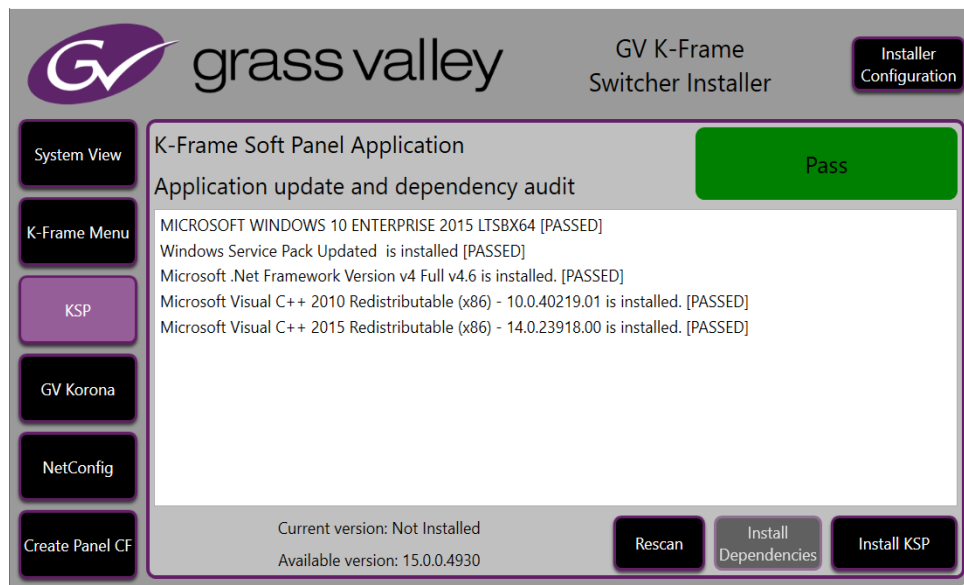
- 2 Verify that the third-party applications have passed the audit.
- 3 If not, the **Install Dependencies** button will be active, select it to update the applications.
- 4 Select **Install K-frame Menu**.
- 5 Select **Yes, update this device** if you agree.

Update the KSP (K-Frame Soft Panel) Software

In addition to updating the KSP software, third party software can be audited and dependencies updated in the K-Frame Soft Panel Application menu.

The **Rescan** button repeats the application dependency audit.

- 1 Select **KSP** in the GV K-Frame Switcher Installer.



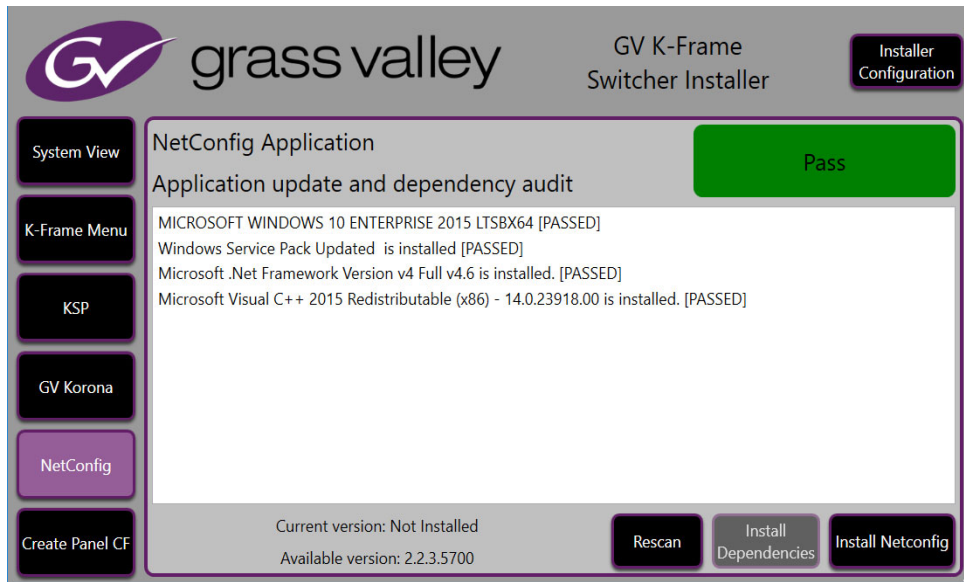
- 2 Verify that the third-party applications have passed the audit.
- 3 If not, the **Install Dependencies** button will be active, select it to update the applications.
- 4 Select **Install KSP**.
- 5 Select **Yes, update this device** if you agree.

Update the NetConfig Software

In addition to updating the NetConfig software, third party software can be audited and dependencies updated for the NetConfig Application menu.

The **Rescan** button repeats the application dependency audit.

- 1 Select **NetConfig** in the GV K-Frame Switcher Installer.



- 2 Verify that the third-party applications have passed the audit.
- 3 If not, the **Install Dependencies** button will be active, select it to update the applications.
- 4 Select **Install NetConfig**.
- 5 Select **Yes, update this device** if you agree.

Create a Control Panel Compact Flash Card

See the *Kayenne/Karrera/GV Korona Installation & Service Manual, Maintenance* section.

About Updating Spare Kayenne Control Panel Modules

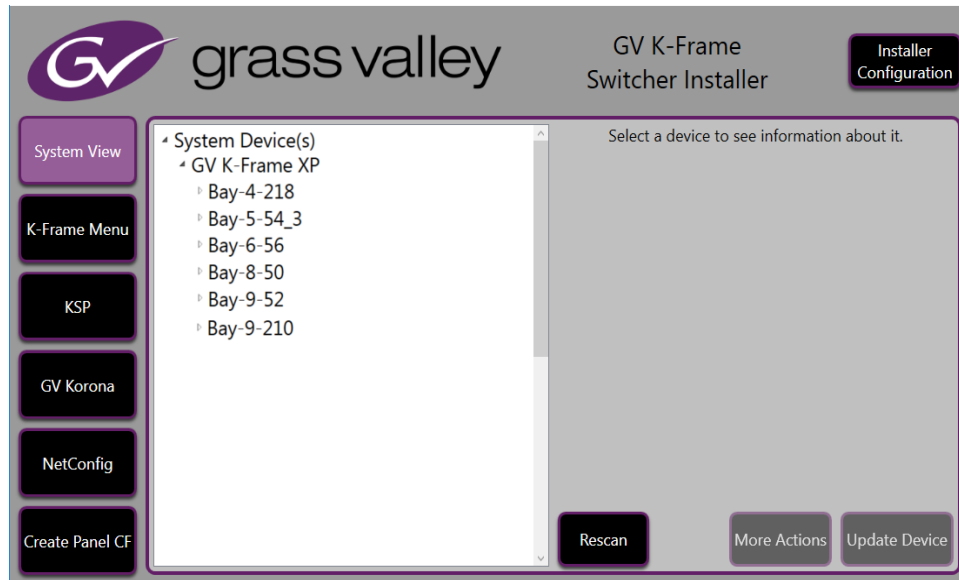
The Kayenne K-Frame Control Panel FPGAs will automatically be updated with software installation. However, spare Kayenne Control Panel Modules must be connected to the Control Panel after initial software installation and the Control Panel software re-installed so all modules are loaded with the current FPGAs and ready for use when needed.

CAUTION: Do not interrupt power to GV switcher systems during software installation; the FPGAs will revert to an older version. If power is lost during software installation, install the software once the power has been restored.

Install the Menu Panel Application Update

CAUTION: For Menu on PC, you must be logged on as administrator or the installation will fail.

- 1 Select the K-Frame Switcher Installer desktop icon, if necessary, to launch the K-Frame Switcher Installer Program.



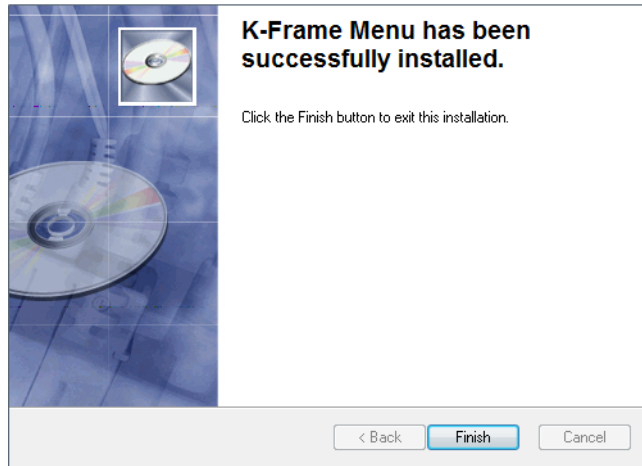
- 2 Select the **Menu** button. The K-Frame Menu Installation tool will launch.



- 3 Select **Next**.
- 4 In either the Karrera, Kayenne, or GV Korona Control Panel area, choose either the Menu Platform (the Touch Screen Menu Panel) or User PC, and select **Next**.
- 5 Enter a name and organization in the User Information screen, leave the Anyone who uses this computer setting selected, and select **Next**.

Note: Selecting Only for me limits some settings to the currently logged in user. This may be appropriate if the Menu application is installed onto a PC shared by several users. However, this is not a foolproof security method and should not be relied on for mission critical applications.

- 6 Select **Next** to accept the default installation location. Alternatively, you can browse to a different location to install the application.
- 7 In the Ready to Install the Application menu, select **Next**.
- 8 When done, the Menu Successfully Installed screen appears, select **Finish**.
If you installed onto Menu hardware you will be prompted to reboot the computer.



- 9 Select **Exit** and answer **Yes** at the prompt to exit the K-Frame Installer.
Selecting the K-Frame Menu icon launches the new version of the Menu Panel application.

Touch Screen PC Installation for KSP

The KSP (K-Frame Soft Panel) installer is intended for a customer provided touch screen PC.

Soft Panel requirements:

- The installed menu software matches the K-Frame system.
- 1920 x1080 display resolution.
- Microsoft .NET Framework 4.5 Windows 7/Windows 10.
- Microsoft Visual Studio 2010 redistributable is installed.

Prepare the Touch Screen PC for KSP

The KSP option is activated with a purchased license key.

- 1 Install the menu and follow the prompts (see [Update the KSP \(K-Frame Soft Panel\) Software](#), on page 13).
- 2 Add the PC's Name and IP Address to the KSP software in the node list, in the Eng Setup, Control Surfaces menu (see *Kayenne/Karrera/GV Korona Installation & Service Manual*).
- 3 See the *KSP Switcher Soft Panel Graphical User Interface Instruction Manual* to configure and operate the KSP, available at www.grassvalley.com.

FPGA and Board ARM Software Upgrades

CAUTION: It is recommended that HAD FPGA Board ARM Software upgrades are performed by qualified personnel only, for example an EIC (Engineer In Charge).

About Host Address Decoder FPGA Upgrades

Each CPU or Image Store board installed in a Grass Valley K-Frame Video Processing Frame has a PCI Express endpoint for communication with the host processor. These PCI endpoints are governed by the HAD (Host Address Decoder) FPGA (Field Programmable Gate Array). Software updates can include firmware upgrades for endpoint HADs. Upgrading the HADs is recommended.

Any out of date HADs will be reported by the menu, however the HAD version match can be checked with the checkHADs command in the Console menu (*Kayenne/Karrera/GV Korona Installation & Service Manual, Maintenance*).

About the IP I/O Board ARM Software

For GV K-Frame X and V-series Frames, each 16x8 and 8x4 Video IP I/O (8x4 only for V-series) and PTP Mezzanine board (GV K-Frame X only) require a board ARM software upgrade as part of the software installation. In most cases, the Board ARM software upgrades are automatic but there are exceptions, see the *Kayenne/Karrera/GV Korona Installation & Service Manual, Maintenance section*.

Sample Files and DPM Effects

Sample files or other elements and instructions for use are provided with an installer from the Grass Valley website. The K-Frame Sample Installer, available on the Software USB thumb drive that came with your system and from the Grass Valley website, can be used to place the K-Frame samples in the C:\K_Frame\user\Samples directory on the GV Switcher system.

IMPORTANT: When upgrading, install the samples after the initial software upgrade.

During installation, you can choose to install all (the default) sample effects or select specific effects, reducing installation times.

Sample DPM Effects

Starting with switcher software version 11.0, sample DPM effects are provided with the K-Frame Sample Installer. It is important to read the accompanying instructions on how to load and run the sample DPM effects.

Note: The C:/Images folder must be a shared folder on the network to use sample Image Store stills with sample DPM Effects.

About K-Frame V-series and S-series Samples and Effects

For K-Frame S-series and V-series Frames, samples that are built using more than four keyers will need some customization before incorporating those elements into a production.

Check Software Versions

Launch the Menu application. The Status menu lists the switcher system devices. Ensure all the components are running the same software version. Mismatched versions will be reported with red text.

The screenshot displays the 'KAYENNE K-FRAME VIDEO PRODUCTION CENTER' interface. A central table lists system components and their software versions. The 'Karrera Panel' entry is highlighted with a red background, indicating a version mismatch.

Node Name	Control Surface	Node Type	IP Address	Version	Date
Kayenne Frame		Video Proc Frame	192.168.0.170	V15.0.0	Apr 23 2020
ImageStore		Image Store	192.168.0.171	V15.0.0	Apr 23 2020
Kayenne	1A	Kayenne Panel	192.168.0.173	V15.0.0	Apr 23 2020
KYN 4ME Menu	1A	Menu Panel	192.168.0.175	V15.0.0	Apr 23 2020
Karrera	2A	Karrera Panel	192.168.0.177	V14.0.0	May 1 2019
KRR 2ME Menu	2A	Menu Panel	192.168.0.176	V15.0.0	Apr 23 2020
Clip Store		Clip Store	192.168.0.180	V15.0.0	Apr 23 2020

Additional system information shown on the right side of the interface includes:

- Menu V12.0.0 Disk Usage: 24.33%
- System Memory Usage: 16%
- System Disk Usage: 15.32%
- ImageStore Disk Usage: 86.92%

Confirm System Operation

- 1 Verify that all the installed MEs are operational. Select different crosspoints on the Control Panel and fly a key with an iDPM.
- 2 Ensure that any software enabled options operate correctly. Existing authorization codes should work with the new software.
- 3 Check that EMEMs run properly:
 - Older effects should work with the new software. If there are differences, however, you will need to edit or rebuild the effect with the new software version.
 - If older effects use iDPMs, it may require that you load, update, and save the show (see the *K-Frame User Manual* for more information).
- 4 Reload the Macros and check that they operate correctly.
- 5 Load some Image Store images and confirm they display correctly.

Back up New Configuration and Effects Files

- 1 When you are satisfied with system operation, save the new configuration files and effects as a Show file to a folder you've created on that version's K-Frame Software USB stick.
- 2 Label the media with the version and date and store it in a safe place.
- 3 Reactivate any virus protection on the Menu panel that may have been disabled at the start of this procedure.

This completes the standard switcher system software update procedure.

Update Other Grass Valley Switcher Systems Software

More than one switcher system (multiple Video Processor Frames) may reside on your network. Each system can operate simultaneously with different software versions, as long as all the components in each system run the same software version.

Additional switcher systems are updated using the same procedure as described.

- 1 Select the other switcher system on the K-Frame Installer Program System hierarchy screen, and choose Update All.
- 2 Insert the K-Frame Software USB stick into each Menu Panel or PC associated with that switcher system and choose the Menu software update button.

Individual Switcher System Component Update

Individual components can be selected for update (just the Video Processor Frame, optional Image Store, or just one Control Panel). However, all components of a switcher system must run the same software version. If updating components individually, make sure they all are at the same version before resuming K-Frame system operation.

CAUTION: Allow the Video Processor Frame and optional Image Store to completely finish rebooting before attempting to install Control Panel software. The Control Panel update process requires the Frame to be operational.

K-Frame Software Removal With Windows OS

K-Frame Deployment Tool versions and Menu Panel programs can be removed using standard Windows techniques (Setup/Add or Remove Programs/Uninstall or Change Programs, etc.).

Deployment Archive Files

When new software versions are installed with the K-Frame Deployment tool, older version deployment files are not automatically removed. Each K-Frame deployment creates its own software version folder. If the default installation location, or the same alternative destination, is always chosen, all the version folders will be listed together.

Note: All the components of a switcher system must run the same software version. If you want to return to an earlier version of software, you should back-down the software on the Video Processor Frame, all Control Panels, and all Menu Panel applications used with that switcher system.

Default destinations:

- C:\Program Files (x86)\Grass Valley\GV Switcher\ K_Frame_Switcher_VX.X for 32-bit
- C:\Program Files\Grass Valley\GV Switcher\ K_Frame_Switcher_VX.X for 64-bit systems.

Running the K_FrameInstaller.exe file in any version's folder will permit installation of that version's files.

CAUTION: Before installing an older version of the Menu Panel application, you must first remove the newer, currently installed Menu Panel version, either using that newer version's K-Frame Deploy Tool or Windows Add or remove programs.

Calibrate the Lever Arm and Joystick

See the Maintenance section of the *Kayenne/Karrera/GV Korona Installation & Service Manual*.

K-Frame System Suggested IP Addresses

K-Frame systems are shipped with default IP addresses, and it is suggested that you reserve several IP Address in sequence to configure Control Panel suites and additional devices. These default addresses can be used if the K-Frame system is operating on a dedicated network with no other devices present.

Note that these addresses can be changed during installation so your system may not be using these defaults.

K-Frame System Default IP Addresses

Device	IP Address
Video Processor Frame	192.168.0.170
Image Store	192.168.0.171
Control Panel Suite 1A	192.168.0.173
Touch Screen Menu Panel 1	192.168.0.175
ClipStore	192.168.0.180
All Subnet Masks)	255.255.255.0
All Gateways (except V1.6.5 software Remote Aux panel)	192.168.0.1
Reserved For Future Use	CAUTION: Do not connect any devices configured with the following IP addresses to a Karrera network.

K-Frame System Default IP Addresses

Device	IP Address
Video Processor Frame Gigabit Ethernet	192.168.0.172
PCU Panel (Kayenne) Reserved LAN Port	192.168.0.174

Note: Customer orders with multiple Control Panels will be pre-configured to the listed IP addresses. However, if one of these additional Control Panels is reset to factory defaults, it will be given the standard 1A default 192.168.0.173 address.

IP Addresses and Single Control Surface Systems

A new Grass Valley system will operate on an isolated network with the default IP addresses configured at the factory (except for 32 Crosspoint Remote Aux panels). However, if you wish to integrate the system into an existing network, wish to use gateway communications, or wish to add more control surface components, then the IP addresses may need to be changed.

IP Addresses and Multiple Control Surfaces and Suites

If you plan to use multiple control surfaces (for example, more than one Control Panel or more than one Menu Panel) with the same Video Processor frame, you must make sure the IP addresses of the additional items are unique before connecting them to the network. Using default IP addresses will cause network conflicts and unpredictable system operation. See the *Kayenne/Karrera/GV Korona Installation & Service Manual* for network configuration information.



Grass Valley Technical Support

For technical assistance, contact our international support center, at 1-800-547-8949 (US and Canada) or +1 530 478 4148.

To obtain a local phone number for the support center nearest you, please consult the Contact Us section of Grass Valley's website (www.grassvalley.com).

An online form for e-mail contact is also available from the website.

Corporate Head Office

Grass Valley
3499 Douglas-B.-Floreani
St-Laurent, Quebec H4S 2C6
Canada
Telephone: +1 514 333 1772
Fax: +1 514 333 9828
www.grassvalley.com