



grass valley

A **BELDEN** BRAND

K-FRAME

VIDEO PRODUCTION CENTER

Release Notes

VERSION 11.1

071896501-AC

2017-07-11

www.grassvalley.com

Copyright and Trademark Notice

Copyright © 2017, Grass Valley Canada. All rights reserved.

Belden, Belden Sending All The Right Signals, and the Belden logo are trademarks or registered trademarks of Belden Inc. or its affiliated companies in the United States and other jurisdictions. Grass Valley, K-Frame, Kayenne, Karrera, GV Korona, ClipStore, Image Store, Flexikey, and DoubleTake are trademarks or registered trademarks of Grass Valley Canada. Belden Inc., Grass Valley Canada, and other parties may also have trademark rights in other terms used herein.

Terms and Conditions

Please read the following terms and conditions carefully. By using Video Production Center documentation, you agree to the following terms and conditions.

Grass Valley hereby grants permission and license to owners of Video Production Center to use their product manuals for their own internal business use. Manuals for Grass Valley products may not be reproduced or transmitted in any form or by any means, electronic or mechanical, including photocopying and recording, for any purpose unless specifically authorized in writing by Grass Valley.

A Grass Valley manual may have been revised to reflect changes made to the product during its manufacturing life. Thus, different versions of a manual may exist for any given product. Care should be taken to ensure that one obtains the proper manual version for a specific product serial number.

Information in this document is subject to change without notice and does not represent a commitment on the part of Grass Valley.

Warranty information is available from the Legal Terms and Conditions section of Grass Valley's website (www.grassvalley.com).

Recycling

Visit www.grassvalley.com for recycling information.

Title	K-FRAME Release Notes
Part Number	071896501-AC
Revision	2017-07-11, 14:11

toc

Table of Contents

1 K-Frame Release Notes, Version 11.1	1
About this Manual	1
For More Information	1
New in Release 11.1	1
GV Korona Control Panel Buttons Added	2
Replace Control Panel Button Function with a Macro Attachment	2
Delete Control Panel Macros and Macro Attachments	3
Setup Aux Bus Transitions	4
Control External Devices from the Control Panel	4
About the K-Frame Software Update	6
Run the Menu Auditor for Third Party Updates	6
Materials Required	8
Update the K-Frame Software	8
K-Frame Installer Program Description	9
Update the K-Frame System Software	11
Update the GV Korona Control Panel Software	12
About Updating Spare Kayenne Control Panel Modules	13
Install the Menu Panel Application Update	13
Soft Panel Installation	15
About Updating the Host Address Decoder (HAD) FPGA	15
Clear NV RAM for Control Panel and Frame	15
Sample Files and DPM Effects	16
Sample DPM Effects	16
About K-Frame V-series and S-series Samples and Effects	17
Install NetConfig and Newton Configurator (Optional)	17
Check Software Versions	17
Confirm System Operation	17
Back up New Configuration and Effects Files	18
Update Other Grass Valley Switcher Systems Software	18
Individual Switcher System Component Update	18
K-Frame Software Removal With Windows OS	19
Deployment Archive Files	19
Calibrate the Lever Arm and Joystick	19
K-Frame System Default IP Addresses	19
IP Addresses and Single Control Surface Systems	20
IP Addresses and Multiple Control Surfaces and Suites	20
Contact Us	23

K-Frame Release Notes, Version 11.1



About this Manual

This document describes the new features and other information specific to the K-Frame Video Production Center, Version 11.1 switcher software for the Kayenne, Karrera, and GV Korona systems.

For More Information

For information about installing, configuring, and operating K-Frame systems, see the K-Frame Video Production Center Documentation Libraries found on the Grass Valley website and on the USB thumb drive provided with your system.

New in Release 11.1

- New GV Korona Control Panel Buttons [page 2](#)
 - Replace Attach Macro [page 2](#)
 - Delete Macro (Includes Kayenne & Karrera) [page 3](#)
 - Aux Bus Transitions [page 4](#)
 - External Device Control [page 4](#)

GV Korona Control Panel Buttons Added

New buttons have been added to the TFT Status Display for Replace Attach macro, Delete Macro, and Aux Bus Delegation. New functionality for Device Control has been added to the Control Panel Source Select area, accessed by the **Sw Pvw** button.

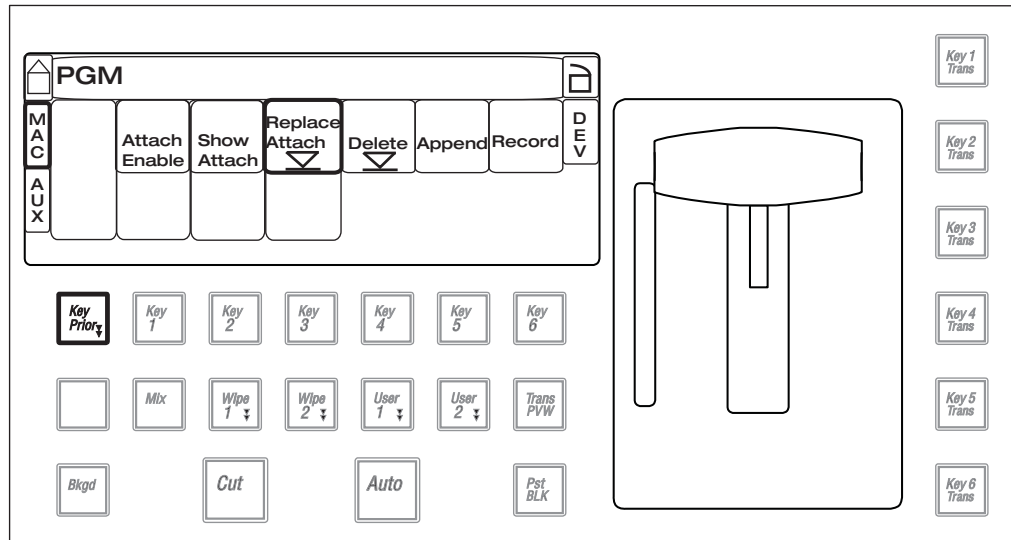
GV Korona—New Control Panel Buttons

Button	State	Description
Macro Buttons		
Replace Attach (macro)	Tap and hold	In the TFT Status Display, replace Control Panel button function (e.g. source selection, keyer, all macro attachments) with an attached macro
Delete (macro)	Tap and hold	<ul style="list-style-type: none"> In the TFT Status Display Delete all macro attachments (Pre-Attach, Replace-Attach, Post-Attach) from Control Panel buttons Delete recorded macro registers Multiple macro attachments and registers can be deleted
Aux Bus Transitions Buttons		
AUX	On/Off toggle	<ul style="list-style-type: none"> On—places TFT Status Display in Aux Bus Transition mode Displays transition type colors: White: On (Cut) Green: Mix Orange: Wipe
Mix	On/Off toggle	Select Mix transition type for selected Aux bus
Wipe	On/Off toggle	Select Wipe transition type for selected Aux bus
Trans Lock	On/Off toggle	Locks transition type (Mix/Wipe) for selected Aux Bus in Aux Bus Transition mode
Device Control (from Control Panel) Buttons		
Sw Pvw	Press and hold	<ul style="list-style-type: none"> Places the 1st button row in Device Control mode Macro buttons are available to the left of Device Control The mode is separate of the TFT Status Display Device Control
CueLoad	Press to trigger	Loads clip if not loaded, Cues loaded clip
Play	Press to trigger	Plays clip
Prev	Press to trigger	Move to previous clips (used with Next for device/stripe delegation)
Next	Press to trigger	Move to next clip (used with Prev for device/stripe delegation)
Device (status only)	Display	OLED: Status showing Control Panel in Device Control mode

Replace Control Panel Button Function with a Macro Attachment

Replace Attach is now consistent across all K-Frame Control Panels, Kayenne, Karrera, and GV Korona. The Replace Attach macro feature allows you to replace the current function of a Control Panel button with a macro attachment.

- 1 Press the **Macro** mode button in the Delegation button row.
- 2 Press a macro button with a recorded macro.
- 3 Tap the **MAC** button in the TFT Status Display.



GV Korona TFT Status Display in Macro Mode

- 4 Tap and hold the **Replace Attach** button on the status display and press a Control Panel button to attach the macro.
 - a On GV Korona, tap the **Replace Attach** button in the status display once to display the Macro, Attach menu.
 - b Turning on the **Show Attach** button in the status display flashes Control Panel buttons with attached macros.
 - c **Attach Enable** must be on to run macros.

Delete Control Panel Macros and Macro Attachments

Delete Macro is now consistent across all K-Frame Control Panels, Kayenne, Karrera, and GV Korona. The **Delete** (Macro) button deletes all attachments (Pre-Attach, Replace-Attach, and Post-Attach) and recorded macros.

Delete a Macro Attachment:

Macro attachment means a recorded macro can be added to the button's function (Pre-attach/Replace Attach/Post-Attach), for example keyer, aux, source selection, etc.

- 1 Enable Delete Macro:
 - a GV Korona—Tap **MAC** then tap and hold the **Delete** button in the TFT Status Display.
 - b Kayenne and Karrera—Press and hold the **Delete** button on the System Bar; Macro buttons high tally.
- 2 While holding the **Delete** button, *press and hold* a Control Panel button with macro attachments —continue to hold **Delete** and *press and hold* additional Control Panel buttons to delete multiple macro attachments.

Delete a Macro Register

In Macro mode, 1st row buttons recall recorded macros. The Delete Macro feature deletes the recorded macro from the register.

- 1 Press the **Macro** mode button in the Delegation button row; recorded macros high tally.

Note: For GV Korona, recorded macros are also accessible in Device Control mode by pressing and holding the **Sw Pvw** delegation button. Macros are displayed on the left side of the 1st bus row.

- 2 Enable Delete Macro:
 - a GV Korona—Tap **MAC** then tap and hold the **Delete** button in the TFT Status Display.
 - b Kayenne and Karrera—Press and hold the **Delete** button on the System Bar.
- 3 While holding the **Delete** button, press a Control Panel macro button—continue to hold **Delete** and press additional Control Panel buttons to delete multiple macros.

Setup Aux Bus Transitions

The AUX status in the TFT Status Display will be OFF unless the Delegation Row is delegated to Aux and an ME partition is allocated for Aux Bus Transition in the User Setups, Suite Prefs, Resource Allocation menu (the Aux Transition Rate can also be set in this menu).

- 1 In the User Setups, Suite Prefs, Resource Allocation menu, select the Aux Trans button in the Application pane and select an ME partition to allocate that resource for Aux Bus Transitions.
- 2 Optionally, select the **Aux Transition Rate** button and set the transition rate in the Enter Rate pop-up keypad and select **Enter**; this is a global setting for all Aux Bus Transitions.
- 3 Press and hold the **Aux** button on the Delegation row; the first row buttons delegated as Aux buses turn blue (see the *K-Frame User Manual* for Button and Aux Delegate Mapping).
- 4 Press an Aux Bus button on the 1st row to select an Aux bus.
- 5 Tap the **Aux** button on the status display and tap **Mix** or **Wipe**.
- 6 Optionally, tap the **Trans Lock** button to lock the transition type (mix or wipe) for the selected bus; whenever that Aux bus is transitioned, it will use the selected transition type.

Control External Devices from the Control Panel

The **Sw Pvw** (Switched Preview) button toggles between Switched Preview and Device Control modes. Transport controls and Device Control, Stripe, and Row statuses are displayed in the OLEDs.

Note: Device Control from the Source Select area in Device Control mode is independent of the TFT Display Device Control feature (accessed by tapping the **Dev** button), allowing you to control two external devices from the GV Korona.

About Macros in Device Control Mode

Macro registers can be executed in Device Control mode, located to the left of the Device Control Transport buttons:

- 7 for a 15 button bank,
- 12 for a 20 button bank, and
- 17 for a 25 button bank.

Delegate a Bus Row for Device Control

- 1 Press and hold the **Sw Pvw** button (high tallies cyan (blue)) in the Delegation row until "Device" is displayed in the right-most OLED.



- 2 Press a Source Select button with a device mapped. *The Device delegation will be the Stripe and bus row of the source button.*

Delegate a Single Device for Control

Unlike bus row delegation, once the device is delegated, selecting another device on the bus row does not change the device under control.

- 1 Press and hold the **Sw Pvw** button (high tallies cyan (blue)) in the Delegation row until "Device" is displayed in the right-most OLED.



- 2 Press and hold the **Prev** and **Next** buttons and press a Source Select button with a device mapped. *The Device delegation will be the selected device.*
 - a To delegate the bus row again, press and hold the **Prev** and **Next** buttons and press a Source Select button with a source other than a device, mapped.
- 3 Press and hold the **Prev** and **Next** buttons to display Stripe and Row status in bus row delegation or the external device name in single device delegation (releasing the buttons turns off the status).



- 4 Press CueLoad; the button tallies orange indicating the clip is ready for playback, press Play.
- 5 Use the Prev (Previous) and Next button to cycle through clips.

About the K-Frame Software Update

K-Frame systems are shipped with the current software version installed on the Frame and Control Surface. Updates to K-Frame system software are available for download from the Grass Valley website. Software installation tools are provided with each update package.

The K-Frame Deployment Tool extracts and copies Grass Valley switcher system files to a Menu Panel or PC. These files include the K-Frame Installer Program.

The K-Frame Installer Program is used to install the extracted software to Grass Valley Video Processor Frame(s) and Control Panel(s) over the network. The K-Frame Installer Program also launches other installation tools (wizards). One wizard installs the Menu application directly on the Menu Panel or PC running the installer program. If multiple Menu Panels (or PCs running the Menu application) exist, each must be updated individually. Installation wizards can also be launched for the KSP and NetConfig features.

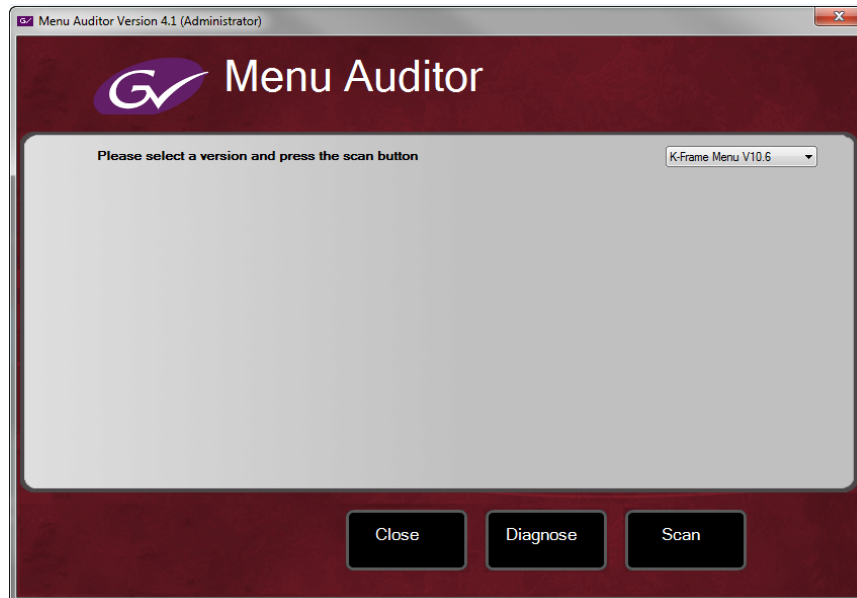
Run the Menu Auditor for Third Party Updates

The Menu Auditor Program is included on the USB Stick provided with your system and available from the grassvalley.com support menu. The Menu Auditor is run to verify that the required Third Party Updates are installed, including Microsoft .NET. The Menu Auditor will indicate which updates need to be installed to ensure an up-to-date system.

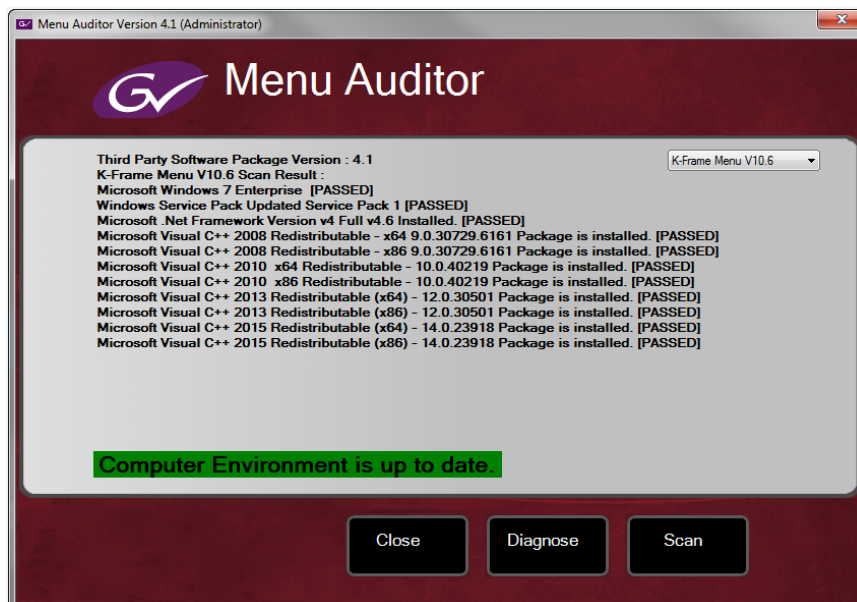
CAUTION: Out of date third-party software can cause the menu to become unstable or stop working.

To check for third party updates on a Menu Panel or Menu on PC:

- 1 Run the Menu Auditor Program.



- 2 Select **Scan**. The Auditor will check each relevant installation and indicate the state of the computer environment.



- 3 Select the **Install** buttons of any files that are not of the correct version.
- 4 Select the **Diagnose** button to run the scan and put the windows machine data into a file for diagnostic purposes.

Materials Required

You will need the following materials for this update:

- K-FrameSetup.exe, which can be downloaded from the Grass Valley Customer Support website along with the latest ClipStore/Summit software, Release Notes, and Release Notes Addendum, and copied to a USB stick,
- Backup media for configuration and effects files,
- USB mouse and keyboard, and
- a Menu Panel, or user PC, properly configured on the switcher system network.

Update the K-Frame Software

This software update procedure assumes your Grass Valley switcher system is fully operational with all network communications properly configured. Refer to the *K-Frame Installation & Service Manual* for configuration instructions.

Back up Current Configuration and Effects Files:

- 1 Save your system configuration files (Eng Setup, User Setups), and your operational registers (EMEM, Macros, etc.) and other settings. You can create a Show file that contains all this information. See the K-Frame Kayenne/Karrera/GV Korona User Manual for file operations instructions.

Note: A thumb drive that includes the current Grass Valley switcher software version is a convenient location to back up these files.

- 2 Store the backup media in a safe place. You may want to use these files if you decide to back down to that earlier software version.

Deploy the Switcher Update Package Files and Installer:

- 1 Exit the Menu application and any other applications that may be running on the Menu Panel or PC.
- 2 Disable any virus protection, Windows firewall, and any other firewall protections that may have been installed on the Menu Panel or PC. Firewalls must be inactive to allow switcher system software installation over the network.
- 3 Run the K-Frame Setup application, either:
 - a Insert the K-Frame Software USB stick into an available port on the Menu Panel or PC. Locate the removable disk in My Computer, open **K-FrameSetup.exe**, and select **OK**,

- or -

 - b Download the K-FrameSetup.exe file from the Grass Valley download site, open the file, and select **OK**.

Note: If the same K-Frame Deployment Tool version files are detected, a Repair/Remove screen is displayed, allowing re-installation or removal of the Deployment files

- 4 Select **Next** in the K-Frame Deployment Tool window.
- 5 Accept the license agreement and select **Next**.

- 6 Select **Next** to accept the default deployment location. Alternatively, you can Browse to a different location to deploy the files. The “Ready to Install the Application” screen appears next.
- 7 Select **Next** to deploy the files.

Result: When the deployment completes, the K-Frame Installer Program will launch automatically. After the switcher files have been deployed, the K-Frame Installer Program can be launched at any time by opening the **K-Frame Installer** from the desktop icon.

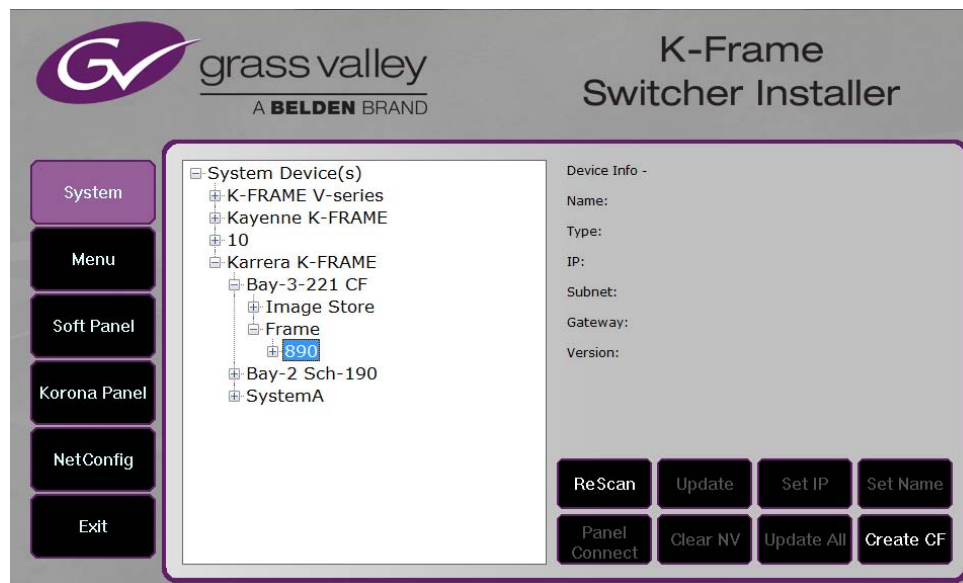
K-Frame Installer Program Description

The K-Frame Installer Program initial screen has buttons on the left used to select various installers.



When **System** is selected, a screen appears with an expandable central hierarchy window, information on the upper right, and function buttons on the lower right.

Navigate to the Kayenne, Karrera, or GV Korona device in the hierarchy to display information for that device or install software.



Selecting **System Device(s)**, at the top of the hierarchy window displays the types of switchers (Kayenne and Karrera) residing on the network. Selecting a switcher type displays the system names present on the network of that switcher type. Each system name is taken from the Video Processor Frame name. Selecting a system name reveals Frame, Panel, and optional Image Store items for that system, which when opened, allows selection of the individual devices making up that system. When a specific device is selected, information for it is displayed on the right. This hierarchy allows easy identification of each switcher system's components when multiple switchers reside on the same network.

The K-Frame Installer program has the following other features, accessed by selecting its labeled button:

Rescan - Re-scans the network for devices. This refreshes the screen to show the currently connected components and any modified system names.

Update - Updates the software on the selected device using the software deployed with this K-Frame Installer version.

Set Name - Opens a window allowing you to change the name of the selected device.

Set IP - (Control Panel selected in hierarchy window) - Opens a window allowing you to enter the IP address the Control Panel will use to communicate with the Video Processor Frame.

Clear NV - (Frame or Control Panel selected) Clears NV Memory.

Update All - (System selected) Updates software to all devices for the selected system, excluding Menus.

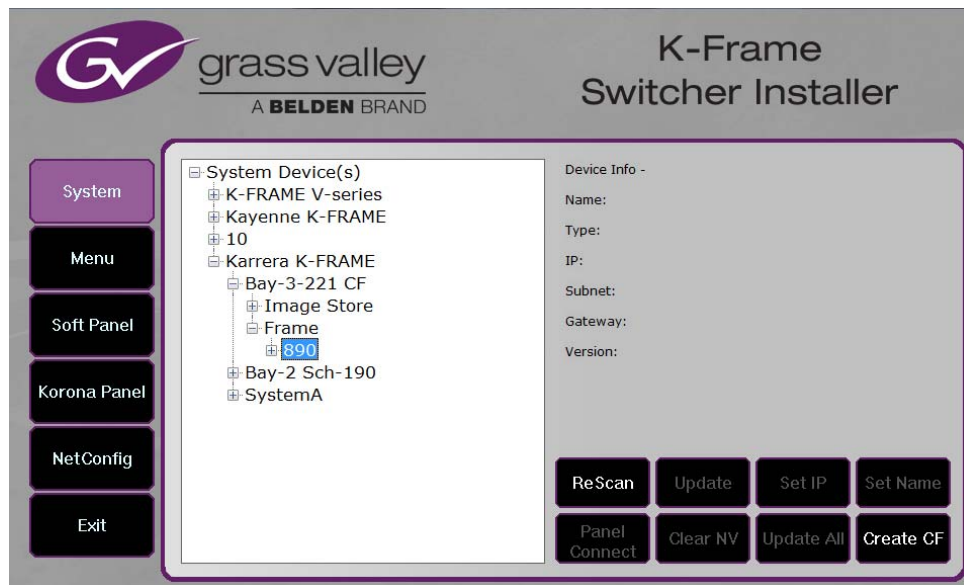
Create CF - Allows the creation of a Control Panel Compact Flash Card onto another CF Card.

CAUTION: The Create CF process wipes and formats the CF card.

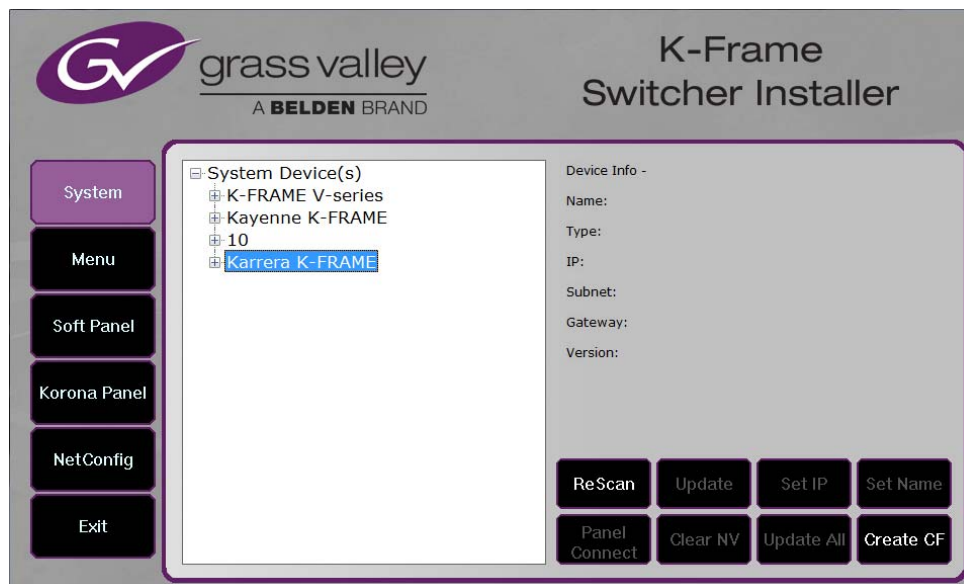
Update the K-Frame System Software

For Kayenne and Karrera, the K-Frame system's Video Processor Frame, Control Panels, and optional Image Stores can be updated in one operation. The GV Korona Control Panel is updated separately from the Frame and Image Store, see [Update the GV Korona Control Panel Software](#), on page 12.

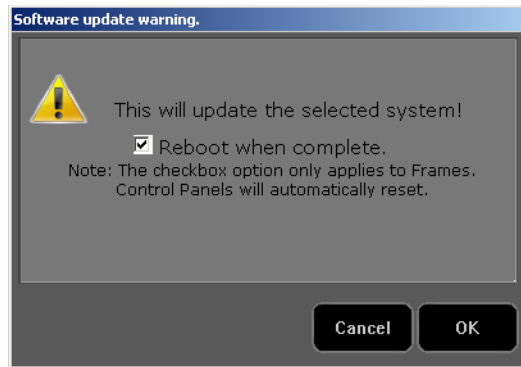
- 1 With the K-Frame Switcher Installer Program launched, select the **System** button.



- 2 In the System menu, each K-Frame Switcher system consists of a Video Processor Frame, associated Control Panels; and PCU(s) for Kayenne, and optional Image Store. Use the mouse to navigate to the desired system (not an individual system device). When a system has been selected the **Update All** button becomes active.



- 3 Select **Update All**. The Software update warning dialog is displayed.



If the Reboot when complete box is checked, the Video Processor Frame, optional Image Store, and all associated Control Panels will reboot after the **OK** button in the Software update warning dialog and the **Finish** button in the Reboot dialog are selected. If the box is not checked, you will need to manually reboot the Video Processor Frame and optional Image Store hardware after the software files have finished installing. Control Panels are always rebooted after a software update.

- 4 Select **OK**.
- 5 Select **Finish** when complete.

Update the GV Korona Control Panel Software

The GV Korona Control Panel software is updated separately from the Video Processor Frame.

- 1 With the K-Frame Switcher Installer Program launched, select **Korona Panel**.



- 2 Accept the License Agreement, select **Next**, and follow the prompts.

About Updating Spare Kayenne Control Panel Modules

The Kayenne K-Frame Control Panel FPGAs will automatically be updated with software installation. However spare Kayenne Control Panel Modules must be connected to the Control Panel after initial software installation and the Control Panel software re-installed so all modules are loaded with the current FPGAs and ready for use when needed.

CAUTION: Do not interrupt power to GV switcher systems during software installation; the FPGAs will revert to an older version. If power is lost during software installation, install the software once the power has been restored.

Install the Menu Panel Application Update

The first-time installation of the Menu application onto a user PC may require installing Windows .NET Framework software. See Install .NET for First Time Menu on PC Installation on page 21 for more information.

The K-Frame Deployment Tool must be run on each Menu Panel or PC onto which you will be installing the Menu Panel application. See Deploy Switcher Update Package Files and Installer on page 12.

CAUTION: For Menu on PC, you must be logged on as administrator or the installation will fail.

- 1 Select the K-Frame Switcher Installer desktop icon, if necessary, to launch the K-Frame Switcher Installer Program.



- 2 Select the **Menu** button. The K-Frame Menu Installation tool will launch.



3 Select **Next**.

4 In either the Karrera, Kayenne, or GV Korona Control Panel area, choose either the Menu Platform (the Touch Screen Menu Panel) or User PC, and select **Next**.

5 Enter a name and organization in the User Information screen, leave the Anyone who uses this computer setting selected, and select **Next**.

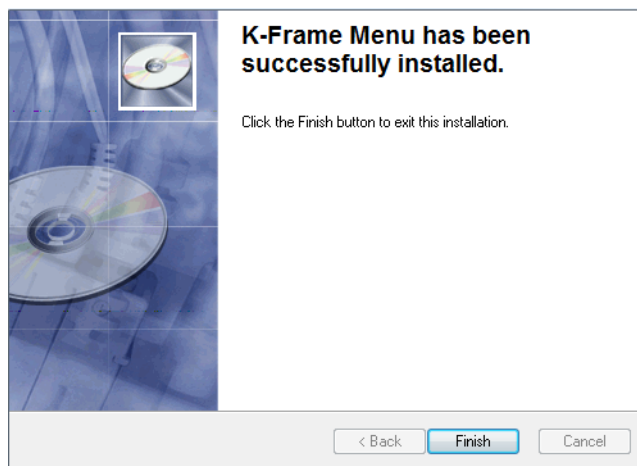
Note: Selecting Only for me limits some settings to the currently logged in user. This may be appropriate if the Menu application is installed onto a PC shared by several users. However, this is not a fool-proof security method and should not be relied on for mission-critical applications.

6 Select **Next** to accept the default installation location. Alternatively, you can browse to a different location to install the application.

7 In the Ready to Install the Application menu, select **Next**.

8 When done, the Menu Successfully Installed screen appears, select **Finish**.

If you installed onto Menu hardware you will be prompted to reboot the computer.



9 Select **Exit** and answer **Yes** at the prompt to exit the K-Frame Installer.

Selecting the K-Frame Menu icon launches the new version of the Menu Panel application.

Soft Panel Installation

Selecting the Soft Panel button launches an individual installer for the KSP option. The Soft Panel installer is intended for a customer provided PC and the process is identical to the Menu on PC (see [Install the Menu Panel Application Update](#), on page 13. Install the menu and follow the prompts. See the *KSP Switcher Soft Panel Graphical User Interface Instruction Manual* for more information.

Soft Panel requirements:

- The installed menu software matches the K-Frame system
- 1920 x1080 display resolution
- Microsoft .NET Framework 4.5 Windows 7/Windows 10 (see [Run the Menu Auditor for Third Party Updates](#), on page 6)
- Microsoft Visual Studio 2010 redistributable is installed—the file is named `vcredist_x86.exe` and is included in the Third-party Updates\VisualStudio2010 folder

Add the PC's Name and IP Address with the KSP software to the node list in the Eng Setup, Control Surfaces menu.

The KSP option is activated with a purchased license key.

About Updating the Host Address Decoder (HAD) FPGA

Each CPU or Image Store board installed in a Grass Valley K-Frame Video Processing Frame has a PCI Express endpoint for communication with the host processor. These PCI endpoints are governed by the HAD FPGA. Software updates can include firmware updates for these endpoint HADs.

For HAD FPGA update instructions, see the maintenance information in the *K-Frame Installation & Service Manual*.

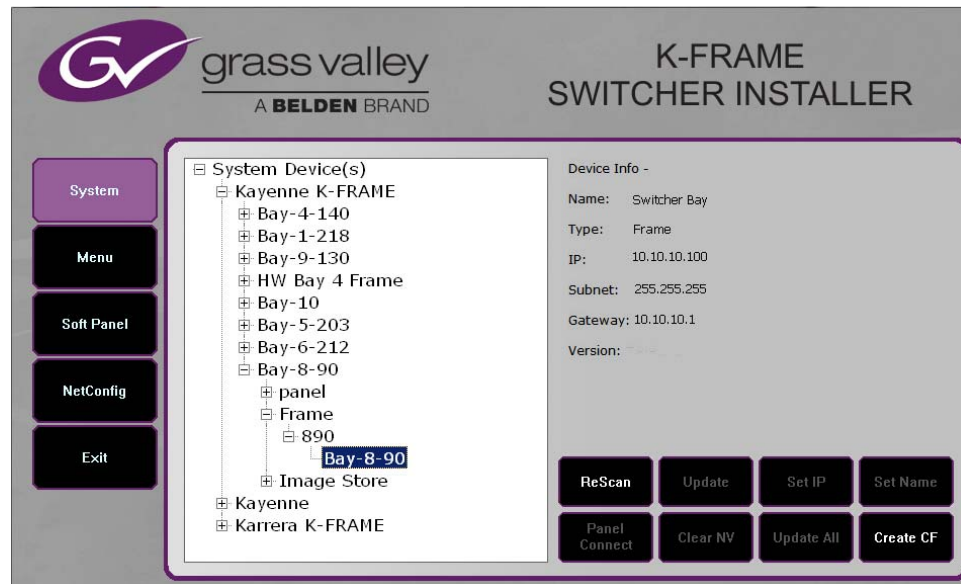
CAUTION: It is recommended that HAD (Host Address Decoder) FPGA (Field Programmable Gate Array) updates are performed by qualified personnel only, for example an EIC (Engineer In Charge).

Clear NV RAM for Control Panel and Frame

Use the following procedure on the Menu Panel or Menu on PC running the Menu Panel application that operates with the updated Video Processor Frame.

Note: A new Menu Panel or PC that has not been used with the switcher system will need to be configured as a Control Surface Node before it can operate with a switcher system. See the *K-Frame Installation & Service Manual* for specific instructions.

- 1 From the K-Frame Installer menu, select the **System** button.



- 2 Select the device to be cleared.
- 3 Select the **Clear NV** button. Repeat for Control Panel and Frame.

Sample Files and DPM Effects

Sample files or other elements and instructions for use are provided with an installer from the Grass Valley website. The K-Frame Sample Installer, available on the Software USB thumb drive that came with your system and from the Grass Valley website, can be used to place the K-Frame samples in the C:\K_Frame\user\Samples directory on the GV Switcher system.

IMPORTANT: When upgrading, install the samples after the initial software upgrade.

During installation, you can choose to install all (the default) sample effects or select specific effects, reducing installation times.

Sample DPM Effects

Starting with switcher software version 11.0, sample DPM effects are provided with the K-Frame Sample Installer. It is important to read the accompanying instructions on how to load and run the sample DPM effects.

Note: The C:/Images folder must be a shared folder on the network to use sample Image Store stills with sample DPM Effects.

About K-Frame V-series and S-series Samples and Effects

For K-Frame S-series and V-series Frames, samples that are built using more than four keys will need some customization before incorporating those elements into a production.

Install NetConfig and Newton Configurator (Optional)

Select the **NetConfig** button to launch the K-Frame NetConfig installer (similar to the Menu Panel installer). Both NetConfig and the Newton Configurator plug-in will be installed. Follow the directions displayed to install these applications onto that Menu Panel or PC.

Note: The K-Frame Installer Application and the separate NetConfig application cannot run simultaneously on the same Menu Panel or PC.

Check Software Versions

Launch the Menu application. The Status menu lists the switcher system devices. Ensure all the components are running the same software version. Mismatched versions will be reported with red text.

Node Name	Control Surface	Node Type	IP Address	Version	Date
Kayenne Frame		Video Proc Frame	192.168.0.170	V11.1.0	Jul 30 2017
ImageStore		Image Store	192.168.0.171	V11.1.0	Jul 30 2017
Kayenne	1A	Kayenne Panel	192.168.0.173	V11.1.0	Jul 30 2017
KYN 4ME Menu	1A	Menu Panel	192.168.0.175	V11.1.0	Jul 30 2017
Karrera	2A	Karrera Panel	192.168.0.177	V11.1.0	Jul 30 2017
KRR 2ME Menu	2A	Menu Panel	192.168.0.176	V10.0.1	Apr 13 2015
Clip Store		Clip Store	192.168.0.180	V11.1.0	Jul 30 2017

Confirm System Operation

- 1 Verify that all the installed MEs are operational. Select different crosspoints on the Control Panel and fly a key with an iDPM.

- 2 Ensure that any software enabled options operate correctly. Existing authorization codes should work with the new software.
- 3 Check that EMEMs run properly:
 - Older effects should work with the new software. If there are differences, however, you will need to edit or rebuild the effect with the new software version.
 - If older effects use iDPMs, it may require that you load, update, and save the show (see the *K-Frame User Manual* for more information).
- 4 Reload the Macros and check that they operate correctly.
- 5 Load some Image Store images and confirm they display correctly.

Back up New Configuration and Effects Files

- 1 When you are satisfied with system operation, save the new configuration files and effects as a Show file to a folder you've created on that version's K-Frame Software USB stick.
- 2 Label the media with the version and date and store it in a safe place.
- 3 Reactivate any virus protection on the Menu panel that may have been disabled at the start of this procedure.

This completes the standard switcher system software update procedure.

Update Other Grass Valley Switcher Systems Software

More than one switcher system (multiple Video Processor Frames) may reside on your network. Each system can operate simultaneously with different software versions, as long as all the components in each system run the same software version.

Additional switcher systems are updated using the same procedure as described.

- 1 Select the other switcher system on the K-Frame Installer Program System hierarchy screen, and choose Update All.
- 2 Insert the K-Frame Software USB stick into each Menu Panel or PC associated with that switcher system and choose the Menu software update button.

Individual Switcher System Component Update

Individual components can be selected for update (just the Video Processor Frame, optional Image Store, or just one Control Panel). However, all components of a switcher system must run the same software version. If updating components individually, make sure they all are at the same version before resuming K-Frame system operation.

CAUTION: Allow the Video Processor Frame and optional Image Store to completely finish rebooting before attempting to install Control Panel software. The Control Panel update process requires the Frame to be operational.

K-Frame Software Removal With Windows OS

K-Frame Deployment Tool versions and Menu Panel programs can be removed using standard Windows techniques (Setup/Add or Remove Programs/Uninstall or Change Programs, etc.).

Deployment Archive Files

When new software versions are installed with the K-Frame Deployment tool, older version deployment files are not automatically removed. Each K-Frame deployment creates its own software version folder. If the default installation location, or the same alternative destination, is always chosen, all the version folders will be listed together.

Note: All the components of a switcher system must run the same software version. If you want to return to an earlier version of software, you should back-down the software on the Video Processor Frame, all Control Panels, and all Menu Panel applications used with that switcher system.

Default destinations:

- C:\Program Files (x86)\ Grass Valley \ GV Switcher \ K_Frame_Switcher_VX.X for 64-bit
- C:\Program Files\ Grass Valley \ GV Switcher \ K_Frame_Switcher_VX.X for 32-bit systems.

Running the K_FrameInstaller.exe file in any version's folder will permit installation of that version's files.

CAUTION: Before installing an older version of the Menu Panel application, you must first uninstall the newer, currently installed Menu Panel version, either using that newer version's K-Frame Deploy Tool or Windows Add/Remove Programs.

Calibrate the Lever Arm and Joystick

See the Maintenance section of the *K-Frame Installation & Service Manual*.

K-Frame System Default IP Addresses

K-Frame systems are shipped with default IP addresses. These default addresses can be used if the K-Frame system is operating on a dedicated network with no other devices present. Note that these addresses can be changed during installation, and so your system may not be using these defaults.

K-Frame System Default IP Addresses

Device	IP Address
Touch Screen Menu Panel 1	192.168.0.175
Touch Screen Menu Panel 2	192.168.0.176

K-Frame System Default IP Addresses

Device	IP Address
Control Panel Surface 1B	192.168.0.177
Control Panel Surface 2A	192.168.0.178
Control Panel Surface 2B	192.168.0.179
ClipStore Server	192.168.0.180
32-Crosspoint Remote Aux Panels V1.6.5 and higher software: (hard reset with the front panel buttons)	IP Address: 192.168.1.2 Frame IP: 192.168.1.1 Gateway IP: 192.168.1.1 Subnet Mask 255.255.255.0 Note: 32-Crosspoint Remote Aux Panel default settings must be changed to operate with a Karrera system whose other components are configured with their default IP addresses.
All Subnet Masks)	255.255.255.0
All Gateways (except V1.6.5 software Remote Aux panel)	192.168.0.1
Reserved For Future Use	CAUTION: Do not connect any devices configured with the following IP addresses to a Karrera network.
Video Processor Frame Gigabit Ethernet	192.168.0.172
PCU Panel (Kayenne) Reserved LAN Port	192.168.0.174

Note: Customer orders with multiple Control Panels will be pre-configured to the listed IP addresses. However, if one of these additional Control Panels is reset to factory defaults, it will be given the standard 1A default 192.168.0.173 address.

IP Addresses and Single Control Surface Systems

A new Grass Valley system will operate on an isolated network with the default IP addresses configured at the factory (except for 32 Crosspoint Remote Aux panels). However, if you wish to integrate the system into an existing network, wish to use gateway communications, or wish to add more control surface components, then the IP addresses may need to be changed.

IP Addresses and Multiple Control Surfaces and Suites

If you plan to use multiple control surfaces (for example, more than one Control Panel or more than one Menu Panel) with the same Video Processor frame, you must make sure the IP addresses of the additional items are unique before connecting them to the network. Using default IP addresses will cause network conflicts and unpredictable system

operation. See the *K-Frame Installation & Service Manual* for network configuration information.



Grass Valley Technical Support

For technical assistance, contact our international support center, at 1-800-547-8949 (US and Canada) or +1 530 478 4148.

To obtain a local phone number for the support center nearest you, please consult the Contact Us section of Grass Valley's website (www.grassvalley.com).

An online form for e-mail contact is also available from the website.

Corporate Head Office

Grass Valley
3499 Douglas-B.-Floreani
St-Laurent, Quebec H4S 2C6
Canada
Telephone: +1 514 333 1772
Fax: +1 514 333 9828
www.grassvalley.com