



grass valley

A **BELDEN** BRAND

K-FRAME

VIDEO PRODUCTION CENTER

Release Notes

VERSION 14.0

071896501-AE

2018-05-31

www.grassvalley.com

Copyright and Trademark Notice

Copyright © 2018, Grass Valley Canada. All rights reserved.

Belden, Belden Sending All The Right Signals, and the Belden logo are trademarks or registered trademarks of Belden Inc. or its affiliated companies in the United States and other jurisdictions. Grass Valley, K-Frame, Kayenne, Karrera, GV Korona, ClipStore, Image Store, Flexikey, and DoubleTake are trademarks or registered trademarks of Grass Valley Canada. Belden Inc., Grass Valley Canada, and other parties may also have trademark rights in other terms used herein.

Terms and Conditions

Please read the following terms and conditions carefully. By using Video Production Center documentation, you agree to the following terms and conditions.

Grass Valley hereby grants permission and license to owners of Video Production Center to use their product manuals for their own internal business use. Manuals for Grass Valley products may not be reproduced or transmitted in any form or by any means, electronic or mechanical, including photocopying and recording, for any purpose unless specifically authorized in writing by Grass Valley.

A Grass Valley manual may have been revised to reflect changes made to the product during its manufacturing life. Thus, different versions of a manual may exist for any given product. Care should be taken to ensure that one obtains the proper manual version for a specific product serial number.

Information in this document is subject to change without notice and does not represent a commitment on the part of Grass Valley.

Warranty information is available from the Legal Terms and Conditions section of Grass Valley's website (www.grassvalley.com).

Recycling

Visit www.grassvalley.com for recycling information.

Title	K-FRAME Release Notes
Part Number	071896501-AE
Revision	2018-05-31, 11:40

toc

Table of Contents

1 K-Frame Release Notes, Version 14.0.....	1
About this Manual.....	1
For More Information.....	1
New in Release 14.0	1
K-Frame Supports Four Suites.....	2
Updated Menus	3
Editor Ports Increased to Four.....	10
V-series 10 Gigabit Ethernet IP I/O Board Support.....	10
Streaming Support for 2022-6 SMPTE Standard.....	11
GV K-Frame X IP SFP Statistics Web Access	12
ARM Processor Board Update Enhancement.....	13
Supported in an Upcoming Release	14
About the K-Frame Software Update	14
Run the Menu Auditor for Third Party Updates	14
Materials Required	16
Update the K-Frame Software.....	16
K-Frame Installer Program Description	17
Update the K-Frame System Software.....	19
Update the GV Korona Control Panel Software	20
About Updating Spare Kayenne Control Panel Modules	20
Install the Menu Panel Application Update	21
Soft Panel Installation.....	22
About Updating the Host Address Decoder (HAD) FPGA	23
About Updating the ARM Processor on the IP I/O and PTP Boards	23
Clear NV RAM for Control Panel and Frame	23
Sample Files and DPM Effects	24
Sample DPM Effects	25
About K-Frame V-series and S-series Samples and Effects	25
Install NetConfig and Newton Configurator (Optional).....	25
Check Software Versions.....	25
Confirm System Operation.....	26
Back up New Configuration and Effects Files.....	26
Update Other Grass Valley Switcher Systems Software.....	27
Individual Switcher System Component Update	27
K-Frame Software Removal With Windows OS	27
Deployment Archive Files.....	27
Calibrate the Lever Arm and Joystick	28
K-Frame System Suggested IP Addresses	28
IP Addresses and Single Control Surface Systems	29
IP Addresses and Multiple Control Surfaces and Suites.....	29
Contact Us	31

K-Frame Release Notes, Version 14.0



About this Manual

This document describes the new features and other information specific to the K-Frame Video Production Center, Version 14.0 switcher software for the Kayenne, Karrera, and GV Korona systems.

For More Information

For information about installing, configuring, and operating K-Frame systems, see the K-Frame Video Production Center Documentation Libraries found on the Grass Valley website and on the USB thumb drive provided with your system.

New in Release 14.0

- Four suites for K-Frame systems [page 2](#)
- 10 Gigabit Ethernet IP I/O board for V-series [page 10](#)
- SMPTE 2022-6 streaming format support [page 11](#)
- GV K-Frame X IP SFP Statistics [page 12](#)
- IP I/O Board ARM Processor Update Enhancement [page 13](#)
- Upcoming Features [page 14](#)

K-Frame Supports Four Suites

Four suites are now standard on the K-Frame family of multi-format digital production switchers. Suite3 (Suite3 CS A/B) and Suite4 (Suite4 CS A/B) function identically to Suite1 and Suite2.



Resources such as M/Es, Image Store channels and inputs, ClipStore, DPM and eDPM channels, Backgrounds, and Multiviewers can be released from one suite and acquired by any of the other three, in the Eng Setup, Acquire Resources menu.

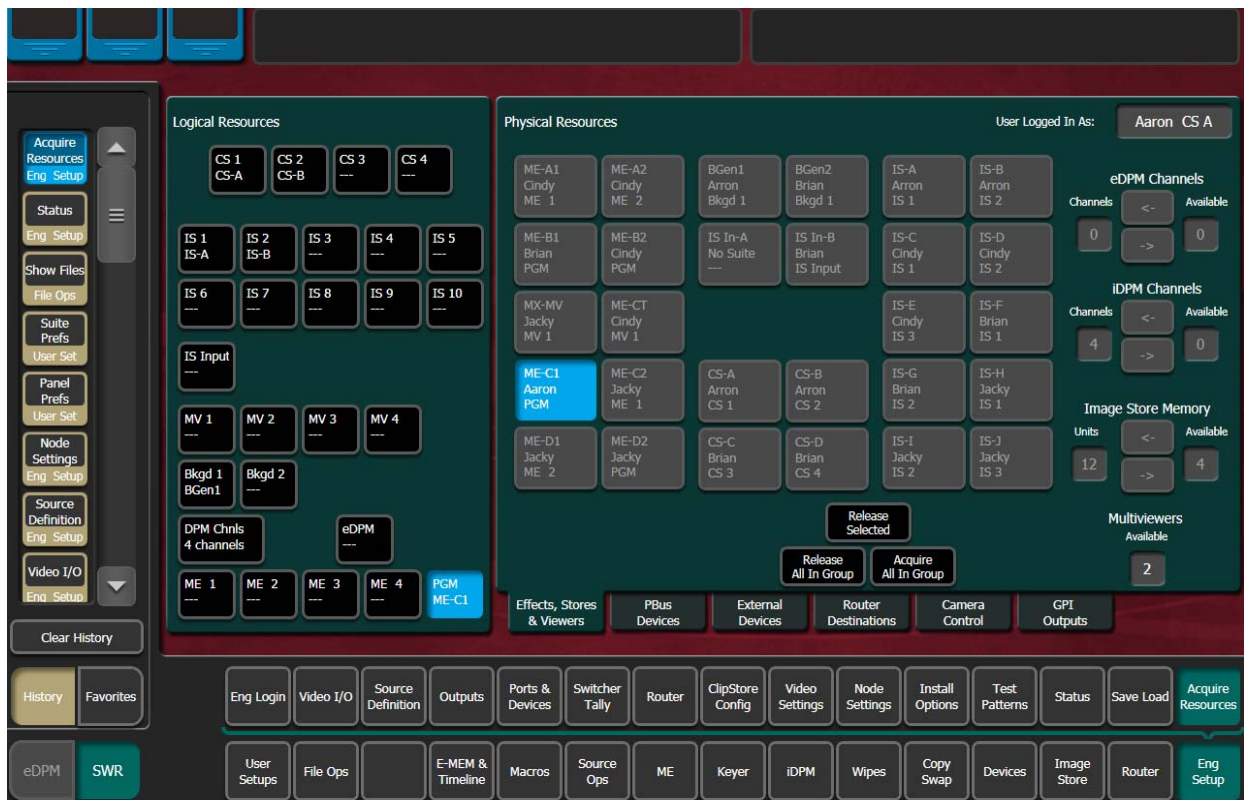
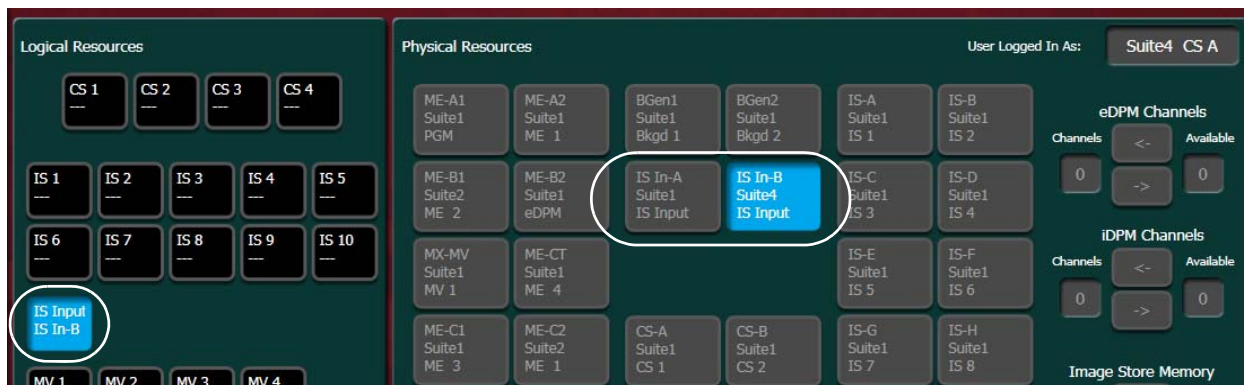


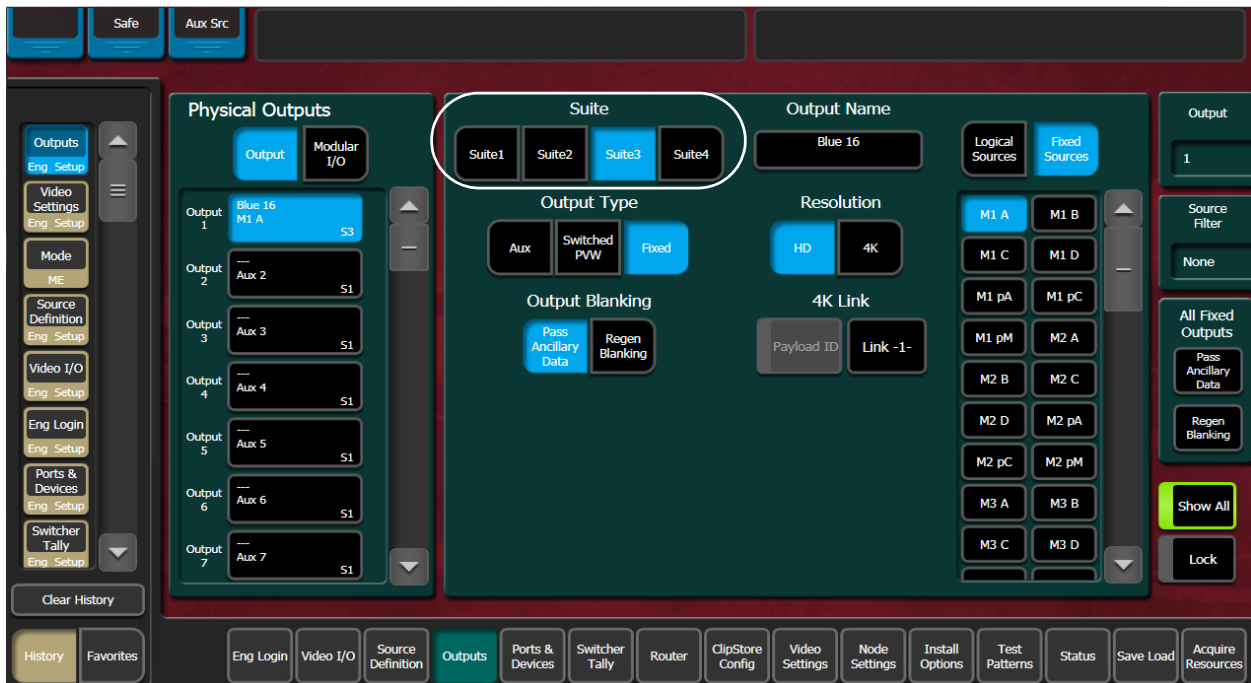
Image Store physical inputs can be configured for two of the four suites, with the exception of the V-series Frame that has four physical Image Store Inputs; one per suite. Image Store inputs are required for recording movies or capturing stills, not for playback or editing).



Updated Menus

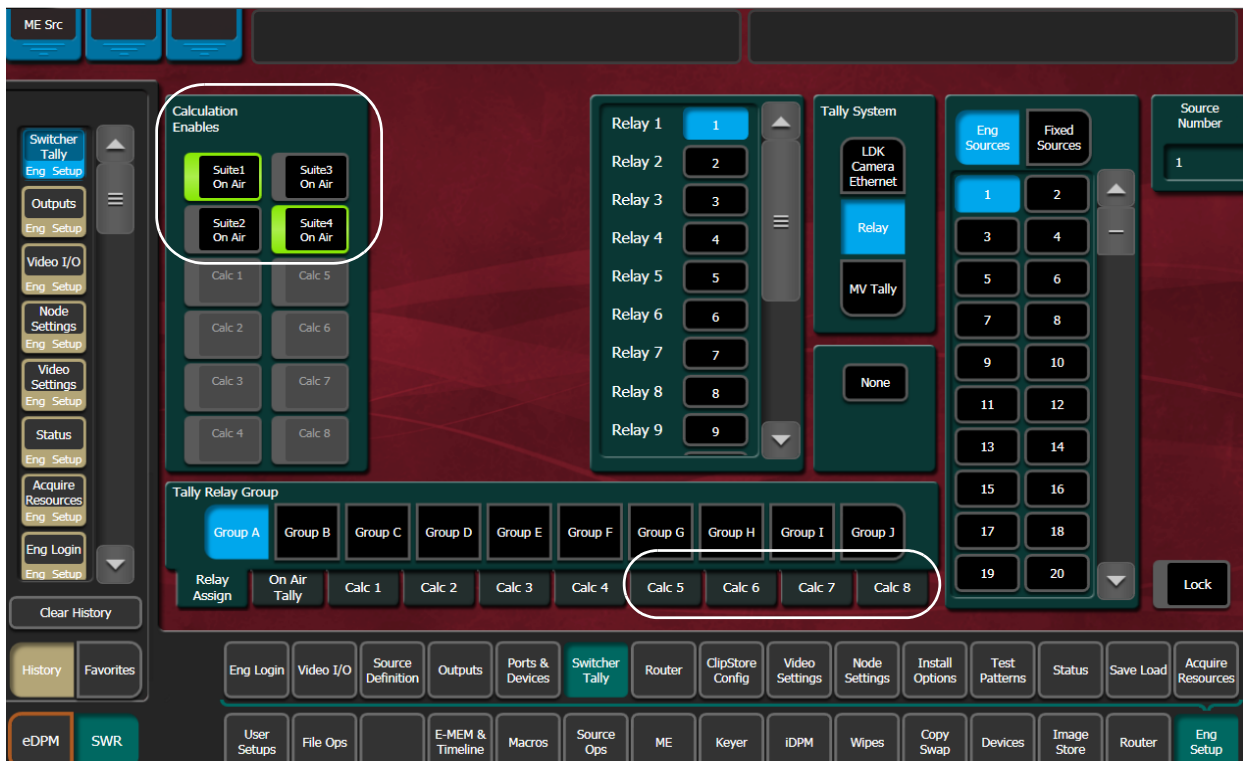
Along with the Eng Setup, Eng Login and Acquire Resources menus, other menus have been updated to add controls for the two additional suites. See the *Kayenne/Karrera/GV Korona Installation & Service Manual* for suite configuration information.

Eng Setup Outputs Menu

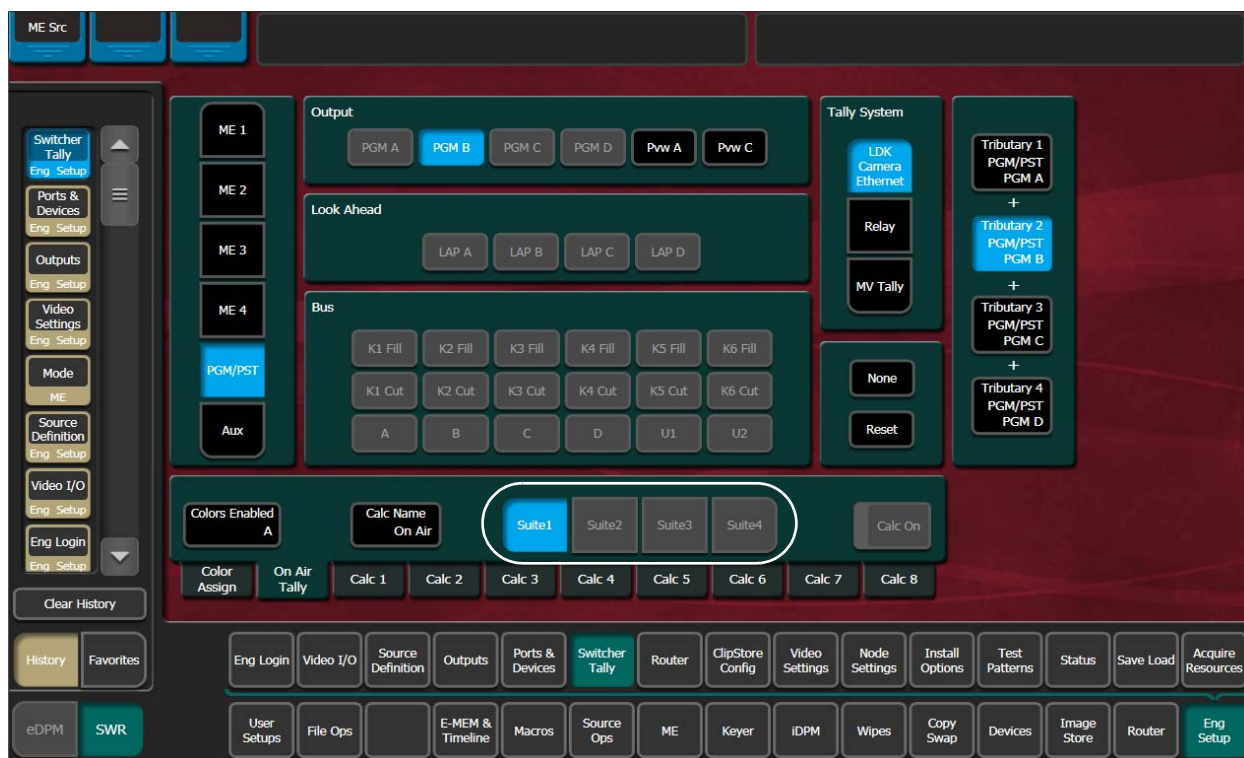


Switcher Tally Menus

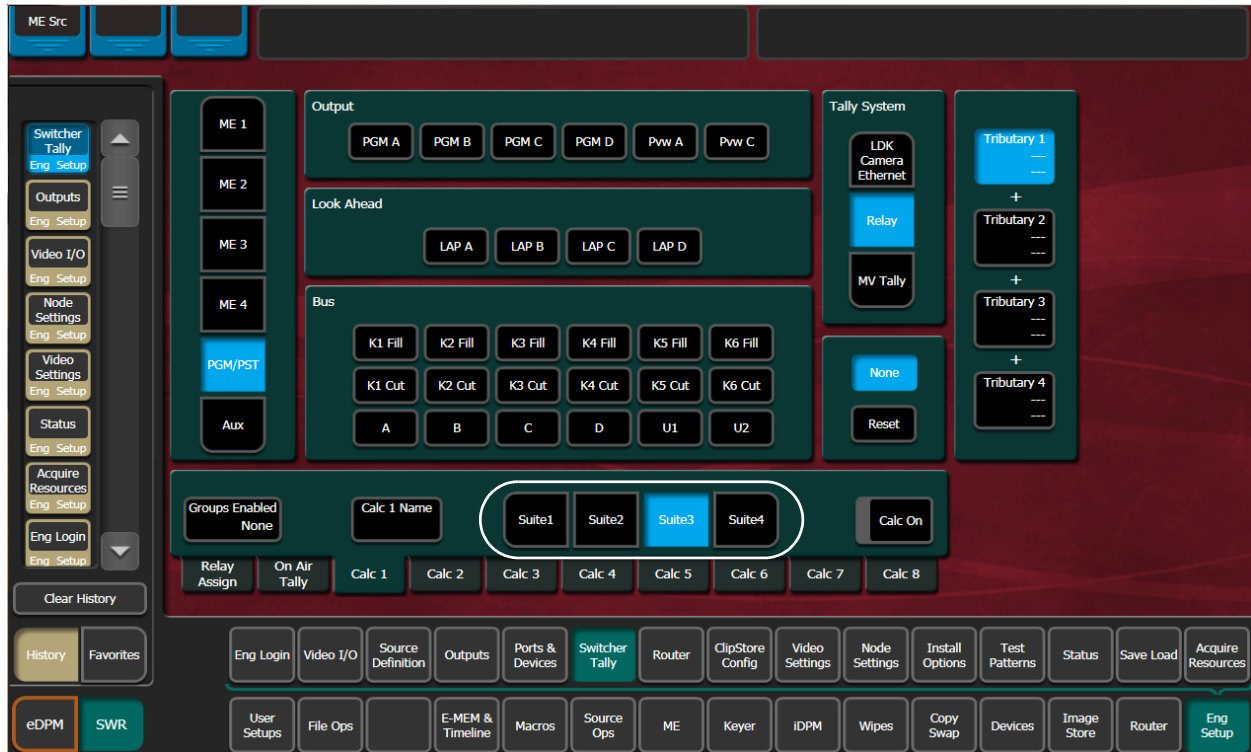
In addition to the two new suites, four more Tally Calculation buttons have been added.



Relay—Relay Assign



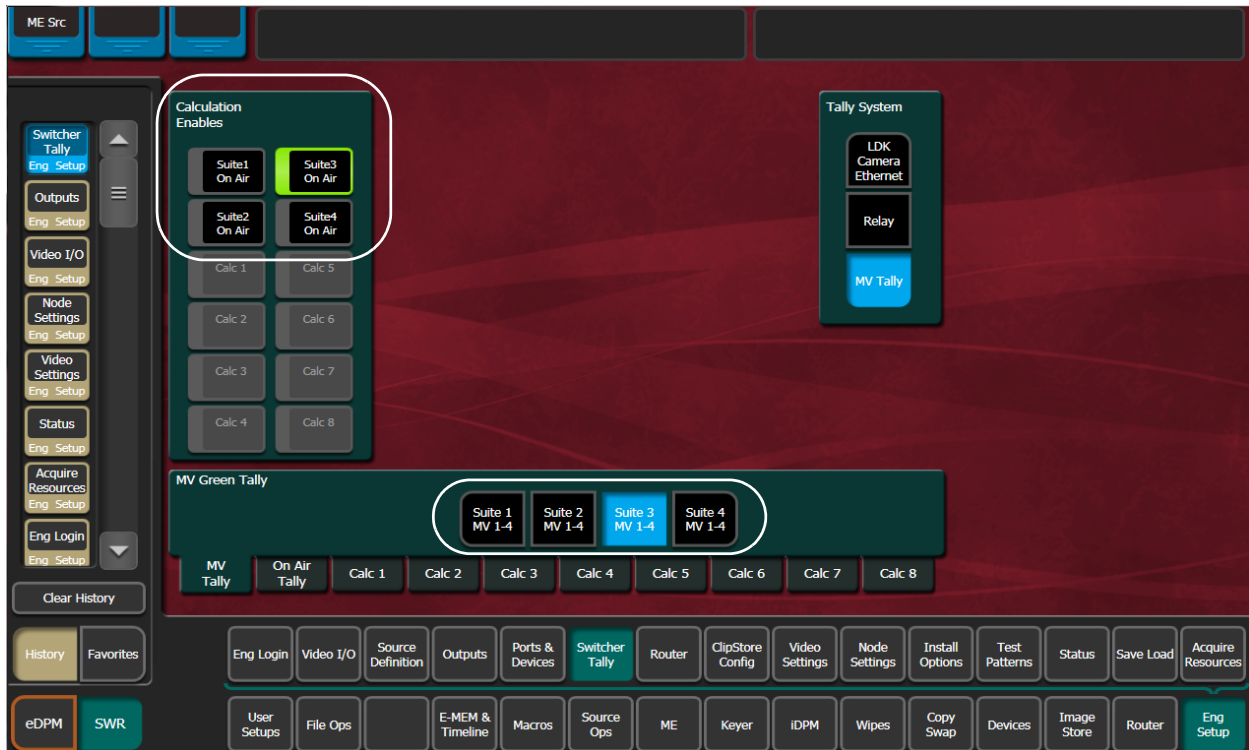
Relay—On Air Tally



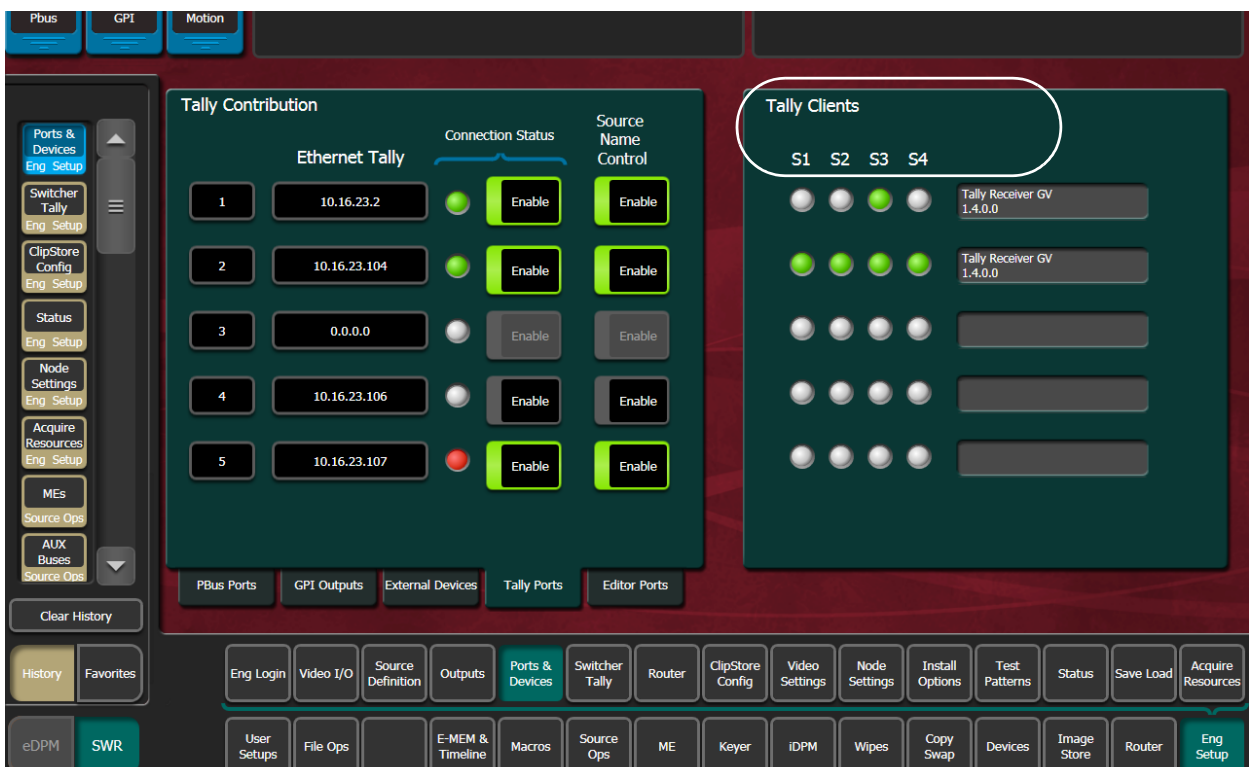
Relay—Calculation



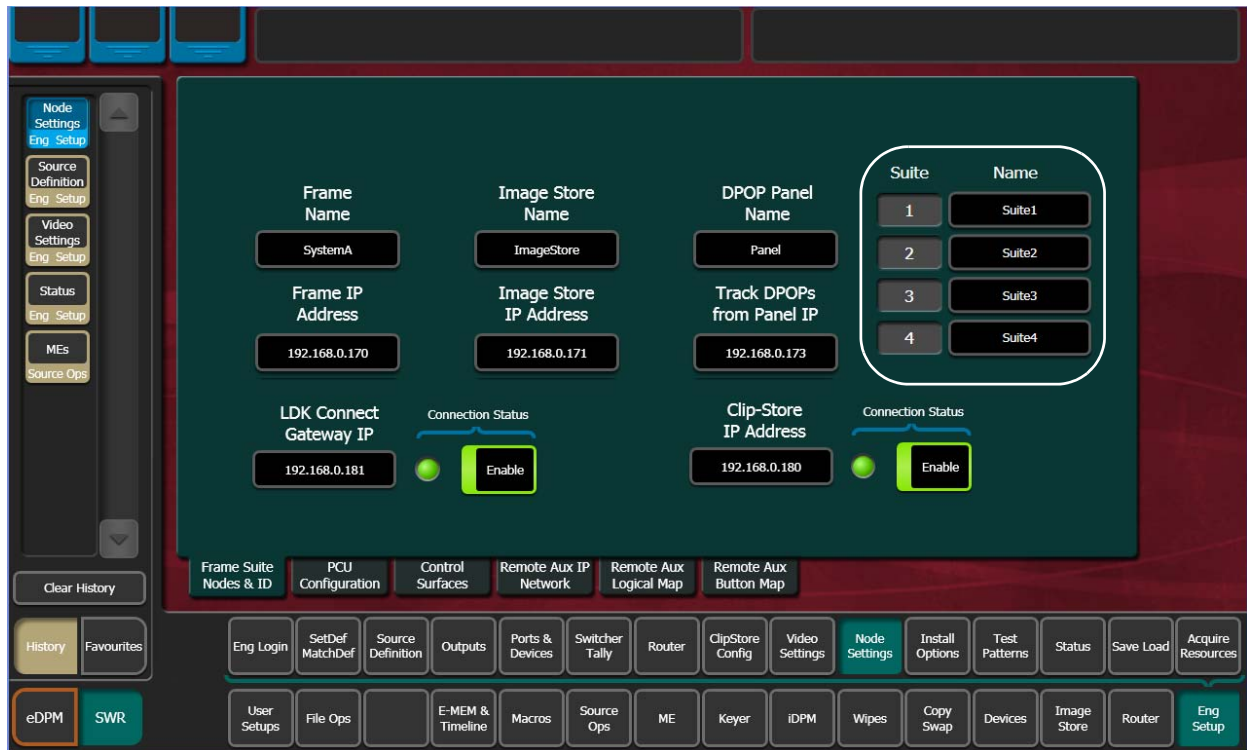
Switcher Tally—LDK Camera



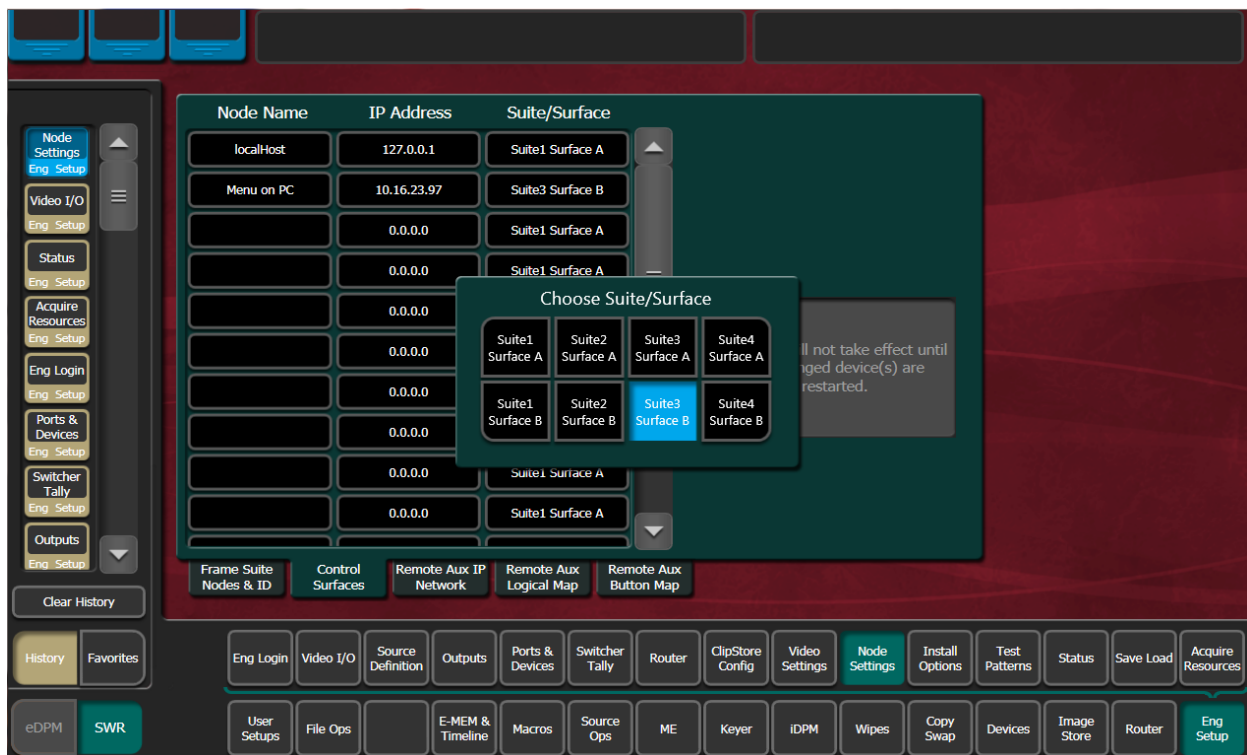
Switcher Tally—MV Tally



Ports & Devices—Tally Ports



Node Settings—Frame Suite



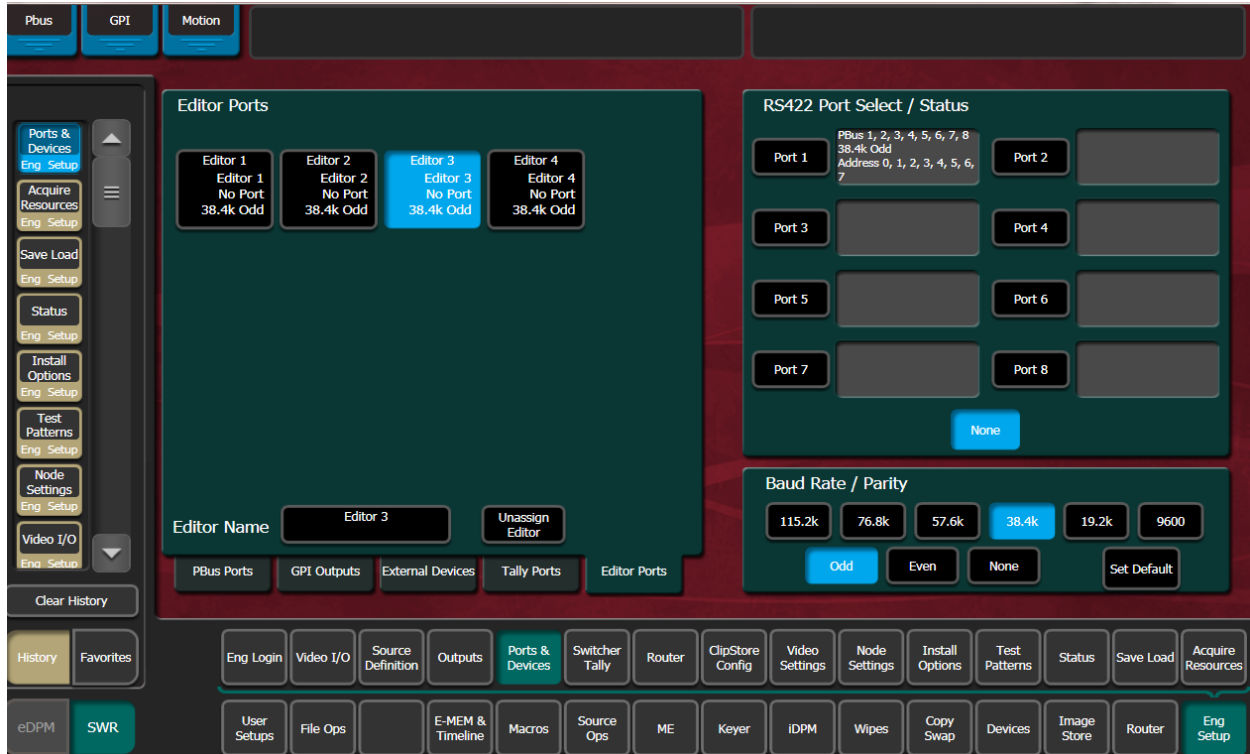
Node Settings—Control Surfaces



Node Settings—Remote Aux Logical Map

Editor Ports Increased to Four

There are now four Editor Ports, one for each suite. See the *Kayenne/Karrera/GV Korona Installation & Service Manual* for configuration information.



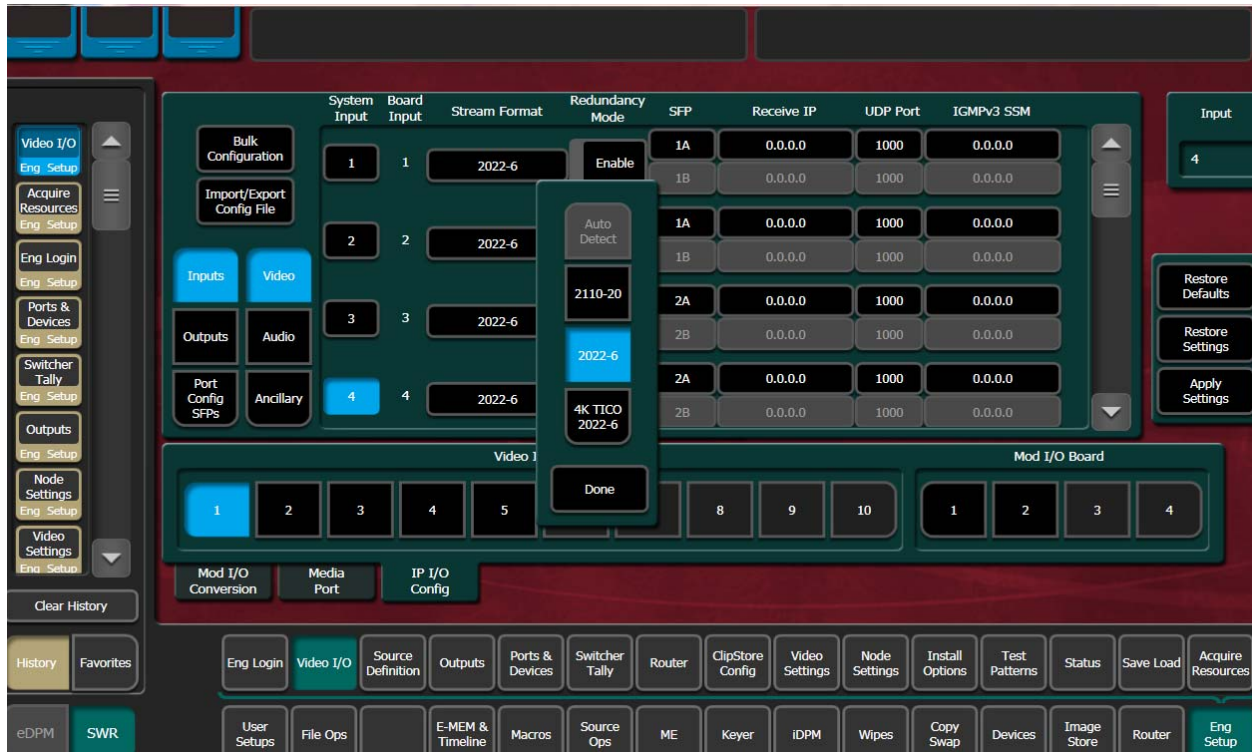
V-series 10 Gigabit Ethernet IP I/O Board Support

Support for the 10G Ethernet IP I/O board (K-FRM-IO-10GE IP I/O) has been added to the K-Frame V-series (also supported in the GV K-Frame X). See the *Kayenne/Karrera/GV Korona Installation & Service Manual* for configuration information.

Streaming Support for 2022-6 SMPTE Standard

Support for the SMPTE standard ST 2022-6 streaming format has been added to the Eng Setup, IP I/O Config menu, replacing ST 2110-50 IP I/O.

Note: SMPTE approved ST 2022-6 as an SDI over IP multiplex standard, rather than ST 2110-50.



GV K-Frame X IP SFP Statistics Web Access

IP SFP Statistics have been added to the GV K-Frame X Web Access pages. You can connect to the K-Frame Web Access by entering the Video Frame's IP Address into a browser from a PC on the network. Buttons are provided to reset packet counts for each I/O board and to refresh the page (refreshes the entire website).

IP SFP Statistics									
SFP	MAC Address	Rx Throughput	Rx PacketCount	Rx ErrorCount	Tx Throughput	Tx PacketCount	Tx ErrorCount	Link Speed (Gb/s)	
1A	00:50:1e:05:83:73	819,334,825	1,001,364,634	0	409,666,507	543,237,699	1	10	
1B	00:50:1e:05:83:74	819,339,584	1,048,341,548	0	409,668,971	543,237,371	1	10	
2A	00:50:1e:05:83:75	819,339,252	1,001,360,525	1	409,668,838	543,237,374	0	10	
2B	00:50:1e:05:83:76	819,474,836	1,048,340,832	2	409,736,680	543,238,141	0	10	
3A	00:50:1e:05:83:77	689,086,715	966,705,097	2	409,654,018	543,237,497	0	10	
3B	00:50:1e:05:83:78	689,087,941	1,011,837,697	1	409,654,700	543,237,590	1	10	
4A	00:50:1e:05:83:79	689,096,143	966,700,797	1	409,659,391	543,237,634	0	10	
4B	00:50:1e:05:83:7a	689,093,996	1,011,834,255	3	409,658,126	543,237,636	1	10	
5A	00:50:1e:05:83:7b	819,249,954	1,086,508,987	1	409,624,175	543,237,324	0	10	
5B	00:50:1e:05:83:7c	1,650	34,471	0	409,667,344	543,237,501	0	10	
6A	00:50:1e:05:83:7d	819,334,887	1,086,509,442	0	409,666,621	543,237,553	0	10	
6B	00:50:1e:05:83:7e	1,650	34,469	0	409,665,356	543,237,541	0	10	
7A	00:50:1e:05:83:7f	819,326,838	1,086,509,498	0	409,662,545	543,237,580	0	10	
7B	00:50:1e:05:83:80	1,650	34,472	0	409,670,545	543,237,271	1	10	
8A	00:50:1e:05:83:81	819,356,583	1,086,508,944	2	409,677,466	543,237,303	1	10	
8B	00:50:1e:05:83:82	1,659	34,473	0	409,743,621	543,237,748	0	10	

Board

16x8 IO IP 1

Reset Packet Counts

Refresh Page

ARM Processor Board Update Enhancement

The ARM Processors on the 16x8 and 8x4 IP I/O and PTP Mezzanine boards can now be updated in parallel, using the Flash All SD Cards menu item.

IMPORTANT: Board software upgrades are to be performed by qualified personnel only.

- 1 Update or verify that the board FPGA HADs are up to date see the *Maintenance* section of the *Kayenne/Karrera/GV Korona Installation & Service Manual*.
- 2 The Frame should have been power cycled at the end of the HAD update, however if it was not, power cycle it now to complete the HAD update.
- 3 Start a Telnet session.
- 4 In the consoleMenu, enter the number nine [9] for Debug, at the prompt: --> 9

```
-> consoleMenu
[1] Status                [2] Controller/ImageStore [3] ME/MV/Xpt
[4] Mezz IO               [5] Mod 8x4 IO           [6] Reference IO
[7] 3D DPM                [8] Spare                [9] Debug
[10] Software Options     [11] Fan Controller      [P] Power Supply
[H] Boot Sw Help         [Z] Test Diagnostics    [D] DisableAllUpdates
[M] DisableAllMonitoring [x] Exit to shell
```

- 5 Enter the number sixteen [16] for Flash All SD Cards at the prompt:

```
[1] GPI                   [2] Tally                 [3] MessageControl
[4] TimeThreads           [5] Router Control       [6] RDP/CPL Tests
[7] Show image info      [8] Show DMA info        [9] Feature Tests
[10] Transition           [11] Switch Image DMA    [12] Temp Show All
[13] Temp Adjust Parm    [14] Dump HAD Info       [15] Flash All HADs
[16] Flash All SD Cards  [17] Flash All HADs/SDs [18] NP Aux Control
[19] Field Timing        [20] CPL Msg Timing      [21] Display Re-entries
[22] DebugNetwork        [23] DebugImageStore     [24] Debug Event Control
[x] Exit
```

CAUTION: The system will go through two reboots so do not interrupt the upgrade process.

The process is only completed after *two* reboots and a statement similar to the following is displayed:

```
bytes transferred = 45000000
bytes transferred = 45779631
Received Start Transfer ack
Set to FIRST_REBOOT from REIMAGE, boardID 154 slot 7
Set to RESTART from SECOND_REBOOT, boardID 154 slot 7
Set to RUN from WAIT_FOR_RUN_AFTER_RESET, boardID 154 slot 7
```

Supported in an Upcoming Release

GV K-Frame X Video Processing Frame

- SNMP
- PTP (Precision Time Protocol) Reference
- Mod I/O Conversion board

Video I/O, IP I/O Config menu buttons and tabs:

The following *GV K-Frame X* and *V-series* menus and buttons are present (some are grayed out), however they will be supported in a future release.

- **Enable**—SFP Redundancy (buttons, **SFP 1B, 2B, 3B**, etc.)
- **Audio**—streaming type (button)
- **Ancillary**—streaming type (button)
- **SFP**—fixed to the default value (buttons in pop-up menu pane (**SFP 2A, SFP 3A**, etc.)
- **Auto Detect** —button - Stream Format pop-up button pane and Bulk Configuration menus
- **IGMPv3 SSM** (button)
- **Mod I/O Conversion** (menu)

Video Settings menu buttons and tabs:

- **PTP Reference** (button/menu)

About the K-Frame Software Update

K-Frame systems are shipped with the current software version installed on the Frame and Control Surface. Updates to K-Frame system software are available for download from the Grass Valley website. Software installation tools are provided with each update package.

The K-Frame Deployment Tool extracts and copies Grass Valley switcher system files to a Menu Panel or PC. These files include the K-Frame Installer Program.

The K-Frame Installer Program is used to install the extracted software to Grass Valley Video Processor Frame(s) and Control Panel(s) over the network. The K-Frame Installer Program also launches other installation tools (wizards). One wizard installs the Menu application directly on the Menu Panel or PC running the installer program. If multiple Menu Panels (or PCs running the Menu application) exist, each must be updated individually. Installation wizards can also be launched for the KSP and NetConfig features.

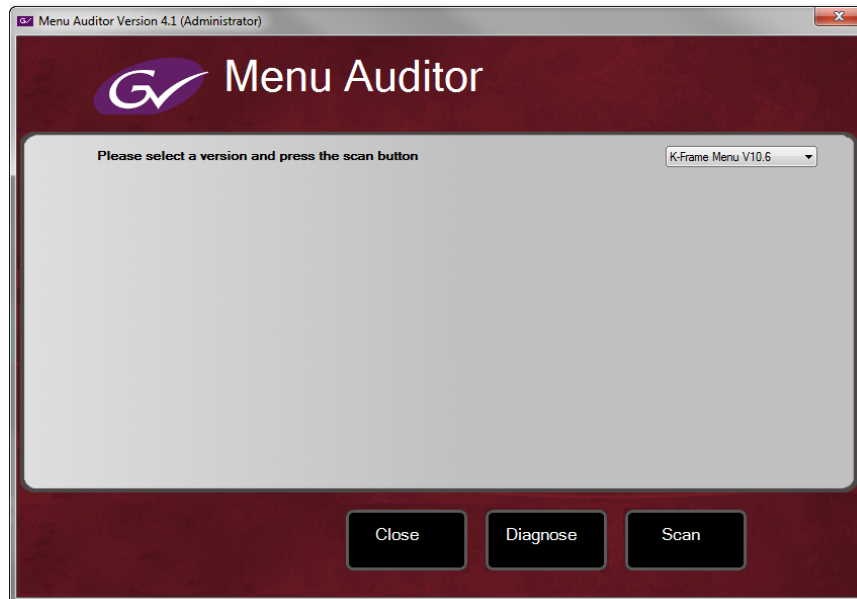
Run the Menu Auditor for Third Party Updates

The Menu Auditor Program is included on the USB Stick provided with your system and available from the grassvalley.com support menu. The Menu Auditor is run to verify that the required Third Party Updates are installed, including Microsoft .NET. The Menu Auditor will indicate which updates need to be installed to ensure an up-to-date system.

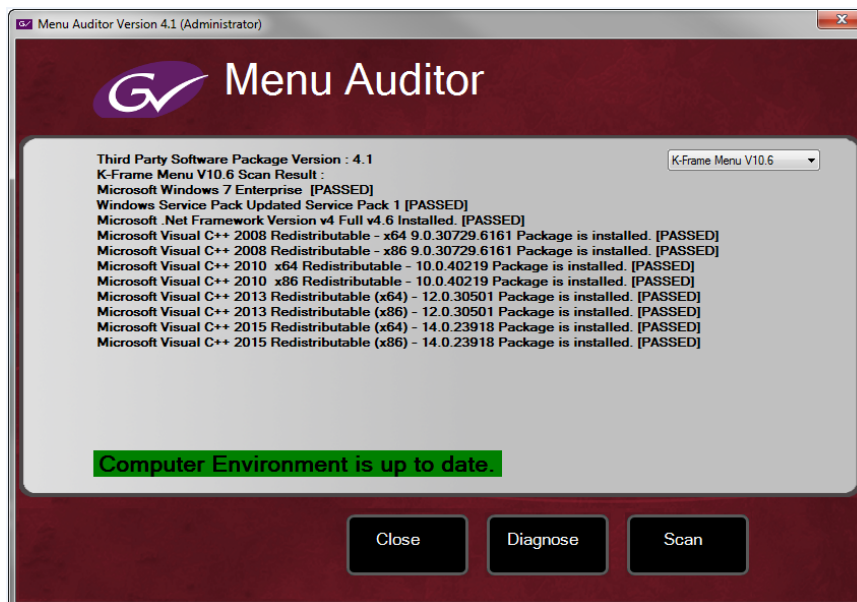
CAUTION: Out of date third-party software can cause the menu to become unstable or stop working.

To check for third party updates on a Menu Panel or Menu on PC:

- 1 Run the Menu Auditor Program.



- 2 Select **Scan**. The Auditor will check each relevant installation and indicate the state of the computer environment.



- 3 Select the **Install** buttons of any files that are not of the correct version.
- 4 Select the **Diagnose** button to run the scan and put the windows machine data into a file for diagnostic purposes.

Materials Required

You will need the following materials for this update:

- K-FrameSetup.exe, which can be downloaded from the Grass Valley Customer Support website along with the latest ClipStore/Summit software, Release Notes, and Release Notes Addendum, and copied to a USB stick,
- Backup media for configuration and effects files,
- USB mouse and keyboard, and
- a Menu Panel, or user PC, properly configured on the switcher system network.

Update the K-Frame Software

This software update procedure assumes your Grass Valley switcher system is fully operational with all network communications properly configured. Refer to the *K-Frame Installation & Service Manual* for configuration instructions.

Back up Current Configuration and Effects Files:

- 1 Save your system configuration files (Eng Setup, User Setups), and your operational registers (EMEM, Macros, etc.) and other settings. You can create a Show file that contains all this information. See the K-Frame Kayenne/Karrera/GV Korona User Manual for file operations instructions.

Note: A thumb drive that includes the current Grass Valley switcher software version is a convenient location to back up these files.

- 2 Store the backup media in a safe place. You may want to use these files if you decide to back down to that earlier software version.

Deploy the Switcher Update Package Files and Installer:

- 1 Exit the Menu application and any other applications that may be running on the Menu Panel or PC.
- 2 Disable any virus protection, Windows firewall, and any other firewall protections that may have been installed on the Menu Panel or PC. Firewalls must be inactive to allow switcher system software installation over the network.
- 3 Run the K-Frame Setup application, either:
 - a Insert the K-Frame Software USB stick into an available port on the Menu Panel or PC. Locate the removable disk in My Computer, open **K-FrameSetup.exe**, and select **OK**,

- or -

 - b Download the K-FrameSetup.exe file from the Grass Valley download site, open the file, and select **OK**.

Note: If the same K-Frame Deployment Tool version files are detected, a Repair/Remove screen is displayed, allowing re-installation or removal of the Deployment files

- 4 Select **Next** in the K-Frame Deployment Tool window.
- 5 Accept the license agreement and select **Next**.

- 6 Select **Next** to accept the default deployment location. Alternatively, you can Browse to a different location to deploy the files. The “Ready to Install the Application” screen appears next.
- 7 Select **Next** to deploy the files.

Result: When the deployment completes, the K-Frame Installer Program will launch automatically. After the switcher files have been deployed, the K-Frame Installer Program can be launched at any time by opening the **K-Frame Installer** from the desktop icon.

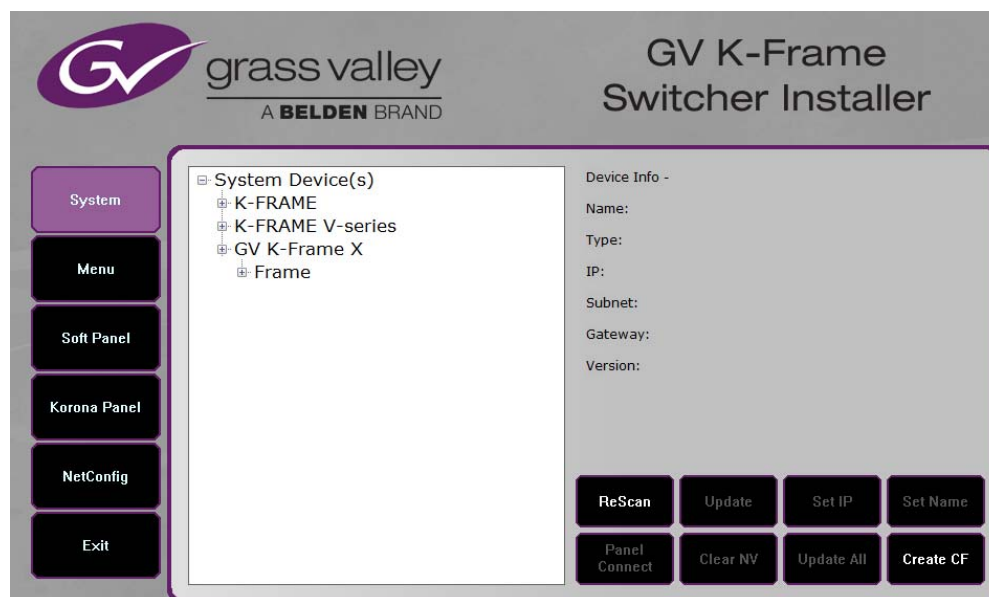
K-Frame Installer Program Description

The K-Frame Installer Program initial screen has buttons on the left used to select various installers.



When **System** is selected, a screen appears with an expandable central hierarchy window, information on the upper right, and function buttons on the lower right.

Navigate to the Frame or Control Panel device in the hierarchy to display information for that device or install software.



Selecting **System Device(s)**, at the top of the hierarchy window displays the types of switcher devices residing on the network. Selecting a switcher device displays the system names present on the network of that switcher. Each system name is taken from the Video Processor Frame name. Selecting a system name reveals Frame, Panel, and optional Image Store items for that system, which when opened, allows selection of the individual devices making up that system. When a specific device is selected, information for it is displayed on the right. This hierarchy allows easy identification of each switcher system's components when multiple switchers reside on the same network.

The K-Frame Installer program has the following other features, accessed by selecting its labeled button:

Rescan - Rescans the network for devices. This refreshes the screen to show the currently connected components and any modified system names.

Update - Updates the software on the selected device using the software deployed with this K-Frame Installer version.

Set Name - Opens a window allowing you to change the name of the selected device.

Set IP - (Control Panel selected in hierarchy window) - Opens a window allowing you to enter the IP address the Control Panel will use to communicate with the Video Processor Frame.

Clear NV - (Frame or Control Panel selected) Clears NV Memory.

Update All - (System selected) Updates software to all devices for the selected system, excluding Menus.

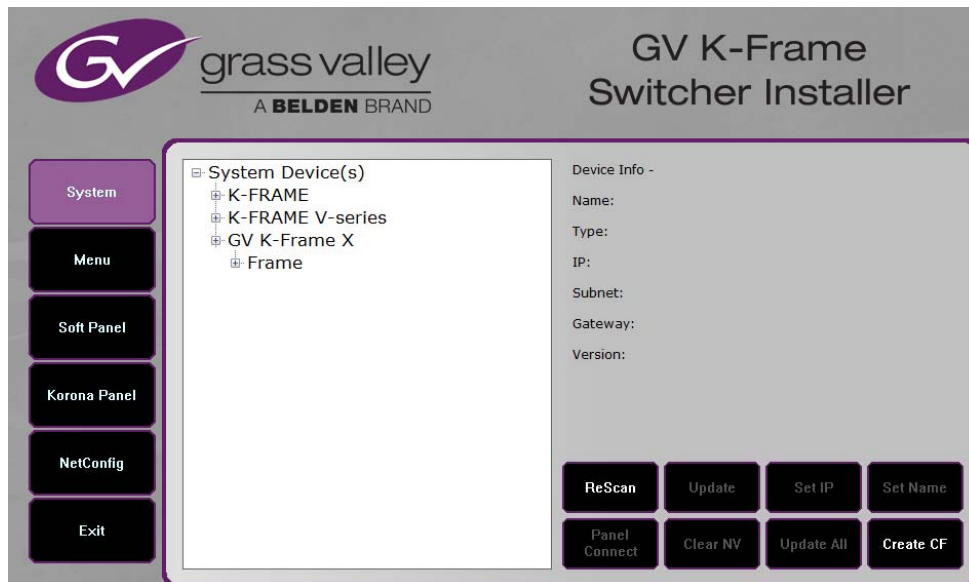
Create CF - Allows the creation of a Control Panel Compact Flash Card onto another CF Card.

CAUTION: The Create CF process wipes and formats the CF card.

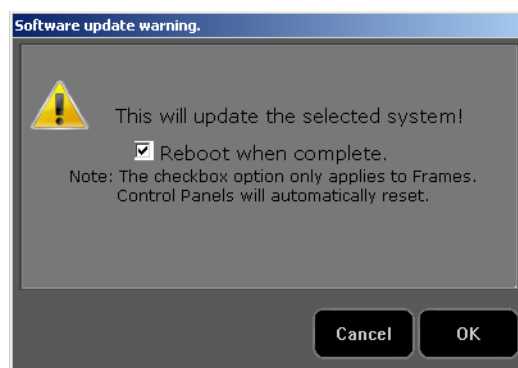
Update the K-Frame System Software

For Kayenne and Karrera, the K-Frame system's Video Processor Frame, Control Panels, and optional Image Stores can be updated in one operation. The GV Korona Control Panel is updated separately from the Frame and Image Store, see [Update the GV Korona Control Panel Software](#), on page 20.

- 1 With the K-Frame Switcher Installer Program launched, select the **System** button.



- 2 In the System menu, each K-Frame Switcher system consists of a Video Processor Frame, associated Control Panels; and PCU(s) for Kayenne, and optional Image Store. Use the mouse to navigate to the desired system (not an individual system device). When a system has been selected the **Update All** button becomes active.
- 3 Select **Update All**. The Software update warning dialog is displayed.



If the Reboot when complete box is checked, the Video Processor Frame, optional Image Store, and all associated Control Panels will reboot after the **OK** button in the Software update warning dialog is selected. If the box is not checked, you will need to manually reboot the Video Processor Frame and optional Image Store hardware after the software files have finished installing. Control Panels are always rebooted after a software update.

- 4 Select **OK**.

- 5 Select **Finish** when complete.

Update the GV Korona Control Panel Software

The GV Korona Control Panel software is updated separately from the Video Processor Frame.

- 1 With the K-Frame Switcher Installer Program launched, select **Korona Panel**.



- 2 Accept the License Agreement, select **Next**, and follow the prompts.

About Updating Spare Kayenne Control Panel Modules

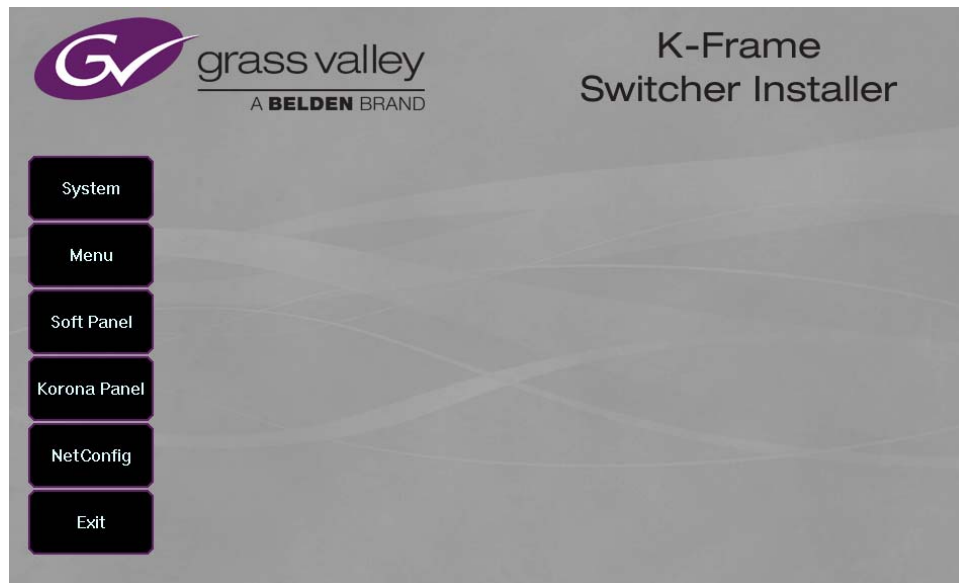
The Kayenne K-Frame Control Panel FPGAs will automatically be updated with software installation. However spare Kayenne Control Panel Modules must be connected to the Control Panel after initial software installation and the Control Panel software re-installed so all modules are loaded with the current FPGAs and ready for use when needed.

CAUTION: Do not interrupt power to GV switcher systems during software installation; the FPGAs will revert to an older version. If power is lost during software installation, install the software once the power has been restored.

Install the Menu Panel Application Update

CAUTION: For Menu on PC, you must be logged on as administrator or the installation will fail.

- 1 Select the K-Frame Switcher Installer desktop icon, if necessary, to launch the K-Frame Switcher Installer Program.



- 2 Select the **Menu** button. The K-Frame Menu Installation tool will launch.

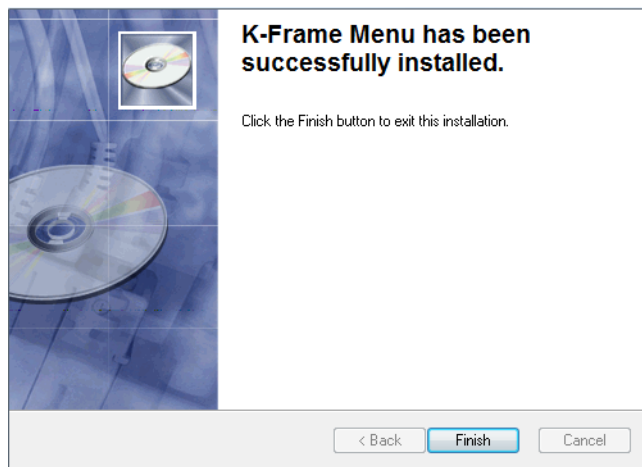


- 3 Select **Next**.
- 4 In either the Karrera, Kayenne, or GV Korona Control Panel area, choose either the Menu Platform (the Touch Screen Menu Panel) or User PC, and select **Next**.

- 5 Enter a name and organization in the User Information screen, leave the Anyone who uses this computer setting selected, and select **Next**.

Note: Selecting Only for me limits some settings to the currently logged in user. This may be appropriate if the Menu application is installed onto a PC shared by several users. However, this is not a foolproof security method and should not be relied on for mission critical applications.

- 6 Select **Next** to accept the default installation location. Alternatively, you can browse to a different location to install the application.
- 7 In the Ready to Install the Application menu, select **Next**.
- 8 When done, the Menu Successfully Installed screen appears, select **Finish**.
If you installed onto Menu hardware you will be prompted to reboot the computer.



- 9 Select **Exit** and answer **Yes** at the prompt to exit the K-Frame Installer.

Selecting the K-Frame Menu icon launches the new version of the Menu Panel application.

Soft Panel Installation

Selecting the Soft Panel button launches an individual installer for the KSP option. The Soft Panel installer is intended for a customer provided PC and the process is identical to the Menu on PC (see [Install the Menu Panel Application Update](#), on page 21. Install the menu and follow the prompts. See the *KSP Switcher Soft Panel Graphical User Interface Instruction Manual* for more information.

Soft Panel requirements:

- The installed menu software matches the K-Frame system
- 1920 x1080 display resolution
- Microsoft .NET Framework 4.5 Windows 7/Windows 10 (see [Run the Menu Auditor for Third Party Updates](#), on page 14)
- Microsoft Visual Studio 2010 redistributable is installed—(see [Run the Menu Auditor for Third Party Updates](#), on page 14)

Add the PC's Name and IP Address with the KSP software to the node list in the Eng Setup, Control Surfaces menu.

The KSP option is activated with a purchased license key.

About Updating the Host Address Decoder (HAD) FPGA

Each CPU or Image Store board installed in a Grass Valley K-Frame Video Processing Frame has a PCI Express endpoint for communication with the host processor. These PCI endpoints are governed by the HAD FPGA. Software updates can include firmware updates for these endpoint HADs.

For HAD FPGA update instructions, see the maintenance information in the *Kayenne/Karrera/GV Korona Installation & Service Manual*.

CAUTION: It is recommended that HAD (Host Address Decoder) FPGA (Field Programmable Gate Array) updates are performed by qualified personnel only, for example an EIC (Engineer In Charge).

About Updating the ARM Processor on the IP I/O and PTP Boards

For GV K-Frame X and V-series Frames, each 16x8 and 8x4 Video IP I/O (8x4 only for V-series) and PTP Mezzanine board (GV K-Frame X only) require an ARM processor software update as part of the software installation. For ARM processor update instructions, see the maintenance information in the *Kayenne/Karrera/GV Korona Installation & Service Manual*.

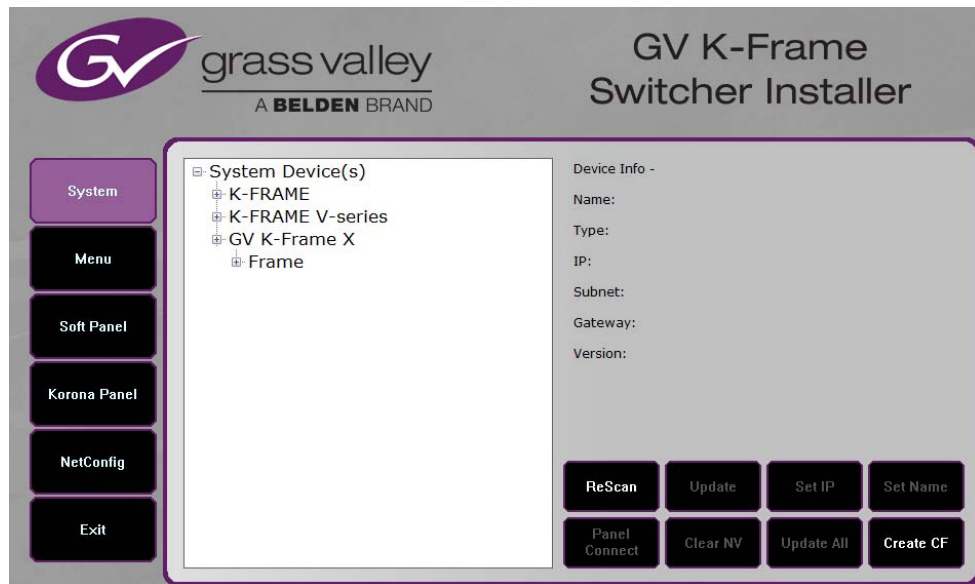
IMPORTANT: Board software updates are to be performed by qualified service personnel only.

Clear NV RAM for Control Panel and Frame

Use the following procedure on the Menu Panel or Menu on PC running the Menu Panel application that operates with the updated Video Processor Frame.

Note: A new Menu Panel or PC that has not been used with the switcher system will need to be configured as a Control Surface Node before it can operate with a switcher system. See the *K-Frame Installation & Service Manual* for specific instructions.

- 1 From the K-Frame Installer menu, select the **System** button.



- 2 Select the device to be cleared.
- 3 Select the **Clear NV** button. Repeat for Control Panel and Frame.



Sample Files and DPM Effects

Sample files or other elements and instructions for use are provided with an installer from the Grass Valley website. The K-Frame Sample Installer, available on the Software USB thumb drive that came with your system and from the Grass Valley website, can be used to place the K-Frame samples in the C:\K_Frame\user\Samples directory on the GV Switcher system.

IMPORTANT: When upgrading, install the samples after the initial software upgrade.

During installation, you can choose to install all (the default) sample effects or select specific effects, reducing installation times.

Sample DPM Effects

Starting with switcher software version 11.0, sample DPM effects are provided with the K-Frame Sample Installer. It is important to read the accompanying instructions on how to load and run the sample DPM effects.

Note: The C:/Images folder must be a shared folder on the network to use sample Image Store stills with sample DPM Effects.

About K-Frame V-series and S-series Samples and Effects

For K-Frame S-series and V-series Frames, samples that are built using more than four keyers will need some customization before incorporating those elements into a production.

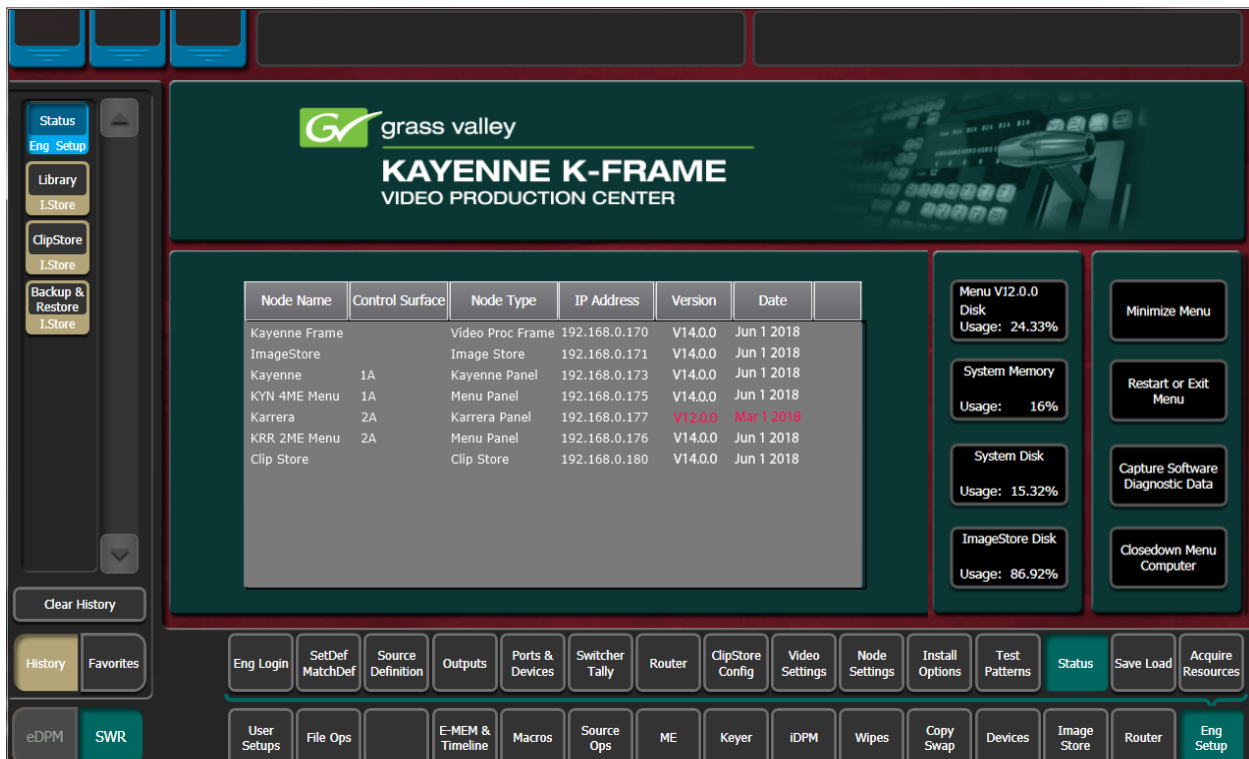
Install NetConfig and Newton Configurator (Optional)

Select the **NetConfig** button to launch the K-Frame NetConfig installer (similar to the Menu Panel installer). Both NetConfig and the Newton Configurator plug-in will be installed. Follow the directions displayed to install these applications onto that Menu Panel or PC.

Note: The K-Frame Installer Application and the separate NetConfig application cannot run simultaneously on the same Menu Panel or PC.

Check Software Versions

Launch the Menu application. The Status menu lists the switcher system devices. Ensure all the components are running the same software version. Mismatched versions will be reported with red text.



Confirm System Operation

- 1 Verify that all the installed MEs are operational. Select different crosspoints on the Control Panel and fly a key with an iDPM.
- 2 Ensure that any software enabled options operate correctly. Existing authorization codes should work with the new software.
- 3 Check that EMEMs run properly:
 - Older effects should work with the new software. If there are differences, however, you will need to edit or rebuild the effect with the new software version.
 - If older effects use iDPMs, it may require that you load, update, and save the show (see the *K-Frame User Manual* for more information).
- 4 Reload the Macros and check that they operate correctly.
- 5 Load some Image Store images and confirm they display correctly.

Back up New Configuration and Effects Files

- 1 When you are satisfied with system operation, save the new configuration files and effects as a Show file to a folder you've created on that version's K-Frame Software USB stick.
- 2 Label the media with the version and date and store it in a safe place.
- 3 Reactivate any virus protection on the Menu panel that may have been disabled at the start of this procedure.

This completes the standard switcher system software update procedure.

Update Other Grass Valley Switcher Systems Software

More than one switcher system (multiple Video Processor Frames) may reside on your network. Each system can operate simultaneously with different software versions, as long as all the components in each system run the same software version.

Additional switcher systems are updated using the same procedure as described.

- 1 Select the other switcher system on the K-Frame Installer Program System hierarchy screen, and choose Update All.
- 2 Insert the K-Frame Software USB stick into each Menu Panel or PC associated with that switcher system and choose the Menu software update button.

Individual Switcher System Component Update

Individual components can be selected for update (just the Video Processor Frame, optional Image Store, or just one Control Panel). However, all components of a switcher system must run the same software version. If updating components individually, make sure they all are at the same version before resuming K-Frame system operation.

CAUTION: Allow the Video Processor Frame and optional Image Store to completely finish rebooting before attempting to install Control Panel software. The Control Panel update process requires the Frame to be operational.

K-Frame Software Removal With Windows OS

K-Frame Deployment Tool versions and Menu Panel programs can be removed using standard Windows techniques (Setup/Add or Remove Programs/Uninstall or Change Programs, etc.).

Deployment Archive Files

When new software versions are installed with the K-Frame Deployment tool, older version deployment files are not automatically removed. Each K-Frame deployment creates its own software version folder. If the default installation location, or the same alternative destination, is always chosen, all the version folders will be listed together.

Note: All the components of a switcher system must run the same software version. If you want to return to an earlier version of software, you should back-down the software on the Video Processor Frame, all Control Panels, and all Menu Panel applications used with that switcher system.

Default destinations:

- C:\Program Files (x86)\Grass Valley\GV Switcher\ K_Frame_Switcher_VX.X for 32-bit
- C:\Program Files\Grass Valley\GV Switcher\ K_Frame_Switcher_VX.X for 64-bit systems.

Running the K_FrameInstaller.exe file in any version's folder will permit installation of that version's files.

CAUTION: Before installing an older version of the Menu Panel application, you must first remove the newer, currently installed Menu Panel version, either using that newer version's K-Frame Deploy Tool or Windows Add or remove programs.

Calibrate the Lever Arm and Joystick

See the Maintenance section of the *Kayenne/Karrera/GV Korona Installation & Service Manual*.

K-Frame System Suggested IP Addresses

K-Frame systems are shipped with default IP addresses, and it is suggested that you reserve several IP Address in sequence to configure Control Panel suites and additional devices. These default addresses can be used if the K-Frame system is operating on a dedicated network with no other devices present.

Note that these addresses can be changed during installation so your system may not be using these defaults.

K-Frame System Default IP Addresses

Device	IP Address
Video Processor Frame	192.168.0.170
Image Store	192.168.0.171
Control Panel Suite 1A	192.168.0.173
Touch Screen Menu Panel 1	192.168.0.175
ClipStore	192.168.0.180
All Subnet Masks)	255.255.255.0
All Gateways (except V1.6.5 software Remote Aux panel)	192.168.0.1
Reserved For Future Use	CAUTION: Do not connect any devices configured with the following IP addresses to a Karrera network.
Video Processor Frame Gigabit Ethernet	192.168.0.172
PCU Panel (Kayenne) Reserved LAN Port	192.168.0.174

Note: Customer orders with multiple Control Panels will be preconfigured to the listed IP addresses. However, if one of these additional Control Panels is reset to factory defaults, it will be given the standard 1A default 192.168.0.173 address.

IP Addresses and Single Control Surface Systems

A new Grass Valley system will operate on an isolated network with the default IP addresses configured at the factory (except for 32 Crosspoint Remote Aux panels). However, if you wish to integrate the system into an existing network, wish to use gateway communications, or wish to add more control surface components, then the IP addresses may need to be changed.

IP Addresses and Multiple Control Surfaces and Suites

If you plan to use multiple control surfaces (for example, more than one Control Panel or more than one Menu Panel) with the same Video Processor frame, you must make sure the IP addresses of the additional items are unique before connecting them to the network. Using default IP addresses will cause network conflicts and unpredictable system operation. See the *Kayenne/Karrera/GV Korona Installation & Service Manual* for network configuration information.



Grass Valley Technical Support

For technical assistance, contact our international support center, at 1-800-547-8949 (US and Canada) or +1 530 478 4148.

To obtain a local phone number for the support center nearest you, please consult the Contact Us section of Grass Valley's website (www.grassvalley.com).

An online form for e-mail contact is also available from the website.

Corporate Head Office

Grass Valley
3499 Douglas-B.-Floreani
St-Laurent, Quebec H4S 2C6
Canada
Telephone: +1 514 333 1772
Fax: +1 514 333 9828
www.grassvalley.com